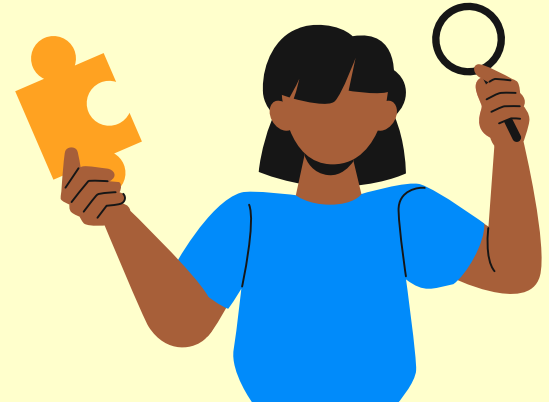
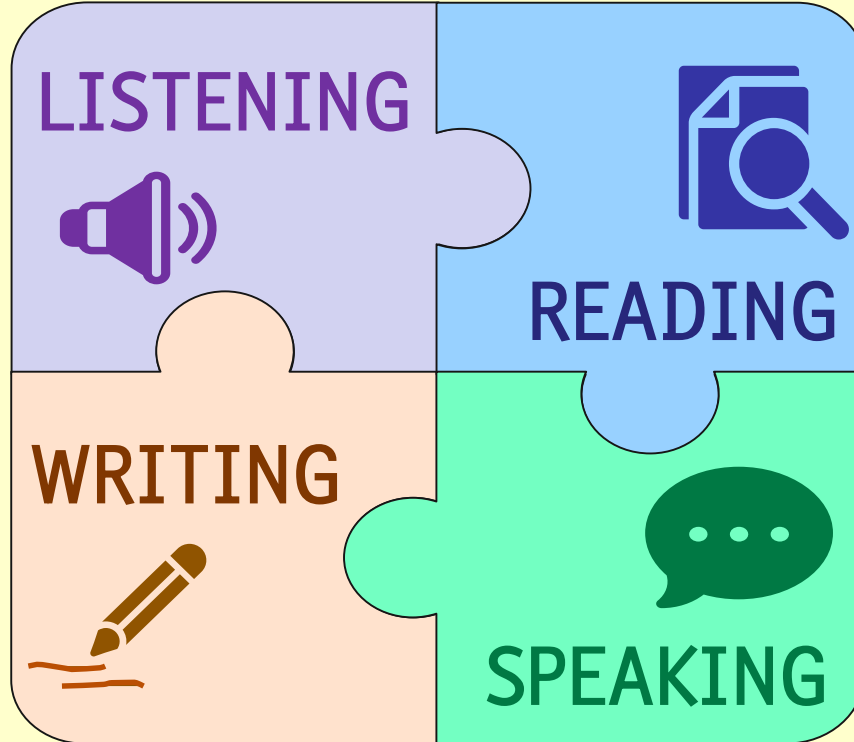


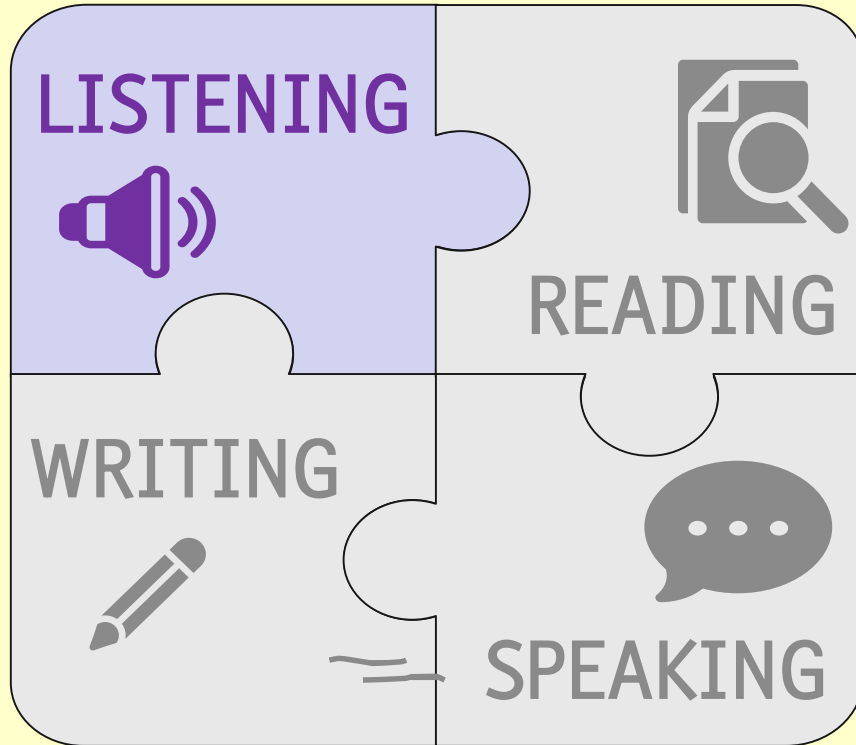
The IELTS TEST



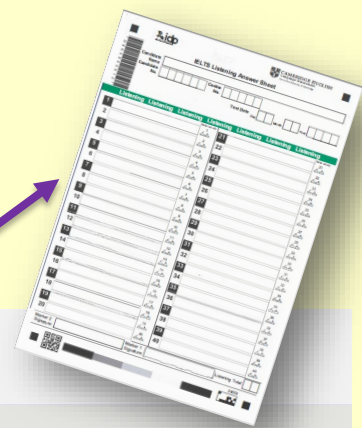
4 SECTIONS



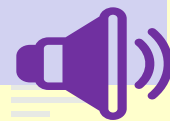
THE IELTS LISTENING TEST



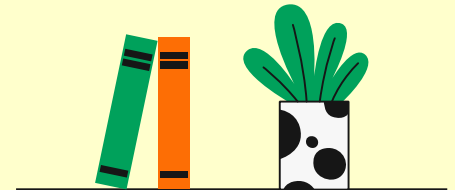
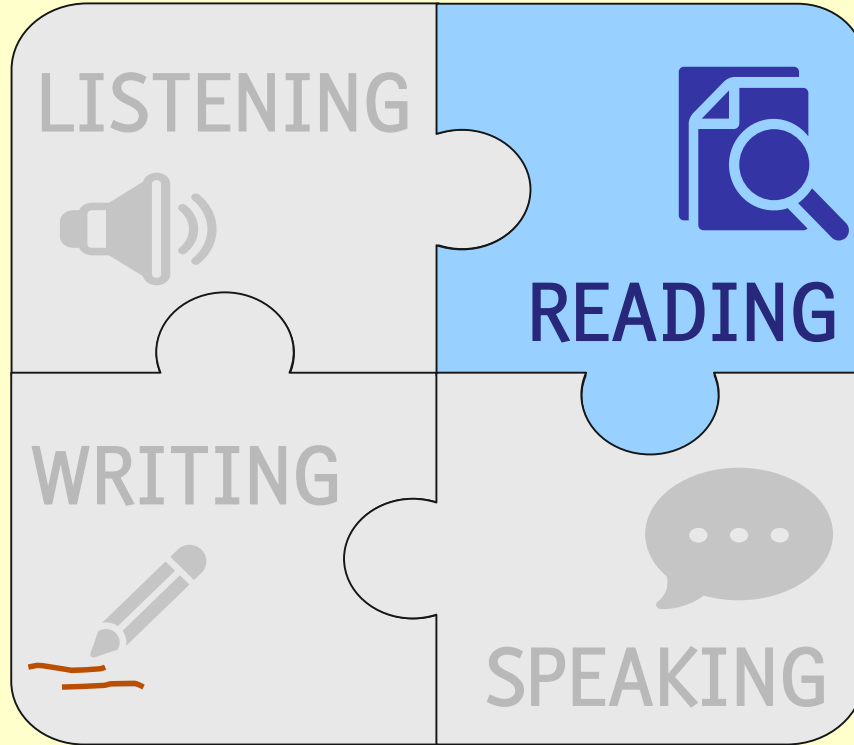
- 4 sections
- Tot. 30 mins + 10 mins to transfer answers to answer sheet



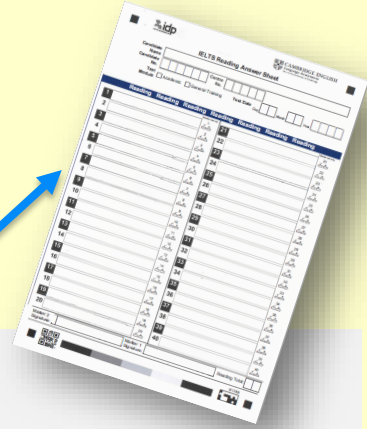
Section	What you hear	Situation	Example
Section 1	Conversation (2 speakers)	Social	e.g. booking a hotel
Section 2	Talk by 1 speaker	General	e.g. radio talk
Section 3	Discussion (2-4 speakers)	Education	e.g. discussion of project / research
Section 4	Talk or lecture (1 speaker)	Academic	e.g. university lecture



THE READING TEST



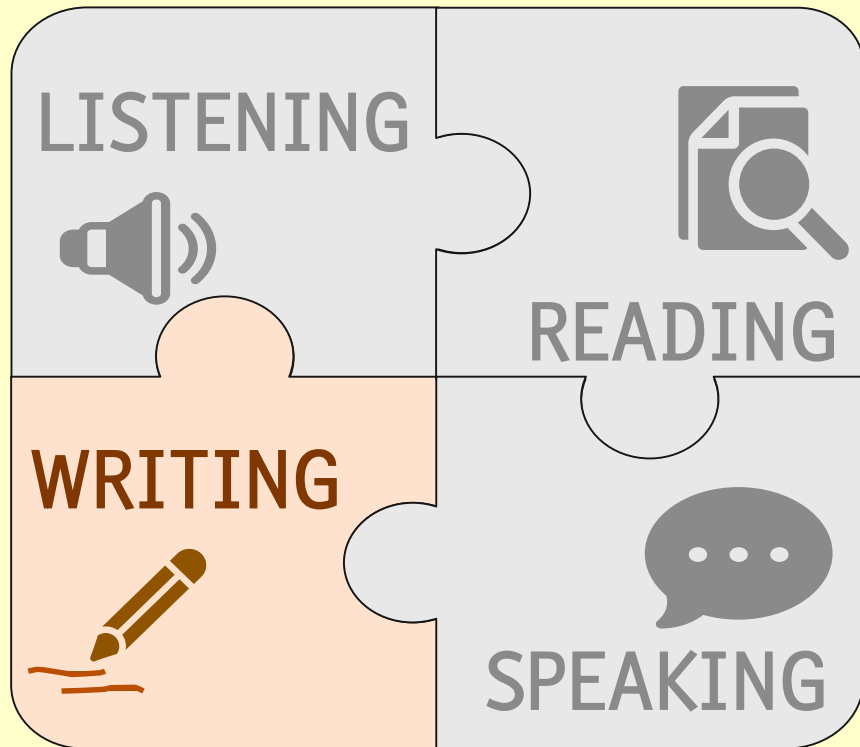
- 3 sections
- Tot. 60 mins
- **NO EXTRA TIME** to transfer answers to **answer sheet**



Section	No of questions		
Section 1	13 questions	1 passage	Approx. 900 words
Section 2	13 questions	1 passage	Approx. 900 words
Section 3	14 questions	1 passage	Approx. 900 words



THE IELTS **WRITING** TEST





Task 1	About 20 mins	150-word summary of info in a graph, chart, table or diagram
Task 2	About 40 mins	250-word discussion essay on a general topic

- 2 tasks
- Tot. 60 mins



THE IELTS SPEAKING TEST





Part 1	4-5 mins	You answer general questions about everyday situations
Part 2	3-4 mins	You speak about a specific topic based on your personal experience
Part 3	4-5 mins	You discuss aspects connected to the topic you spoke about in Part 2

- 3 Parts
- Tot. 14 mins



For more details on the IELTS TEST format

<https://ielts.org/take-a-test/test-types/ielts-academic-test/academic-test-format-in-detail>

