



# KTH Royal Institute of Technology

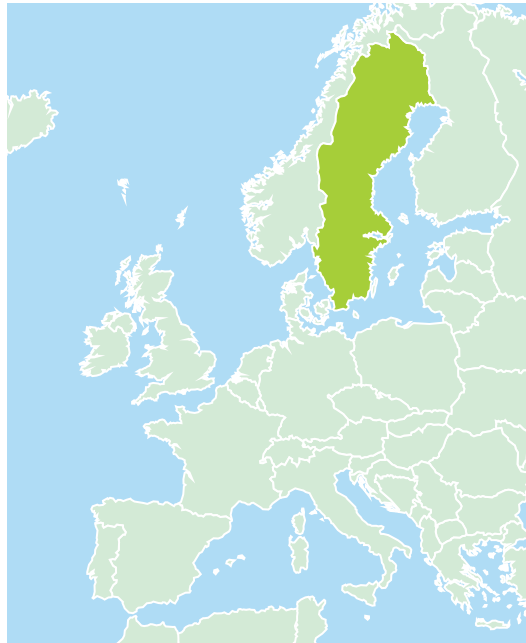
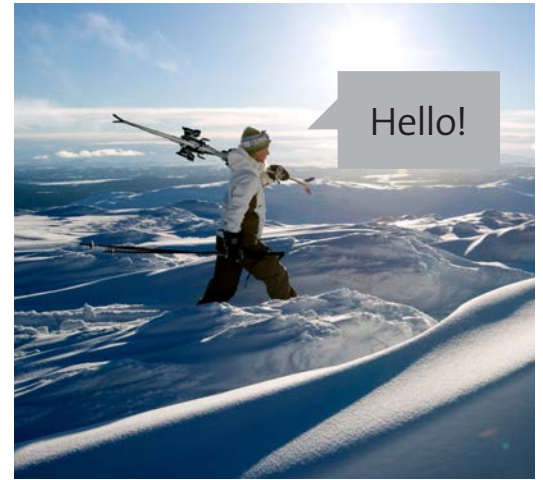
Exchange studies





## Sweden

An open, multicultural society with a tradition of welcoming students from all over the world



10.2 million inhabitants



5 in the world when it comes to gender equality

## Stockholm

Capital of Sweden and heart of Swedish trade, business and innovation



12th safest city  
in the world

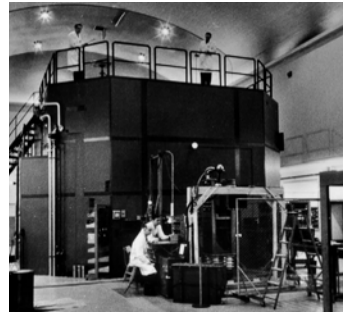


12th most  
liveable city in  
the world



# KTH Royal Institute of Technology

Sweden's leading technical university



13,500 students  
1,600 PhD  
310 professors  
5,000 staff



Top 100 in  
QS World  
University  
Ranking 2020







KTH Flemingsberg

KTH Södertälje

KTH Solna

KTH Kista

Royal national park

Sports centre

President's office

Student union

KTH Library

Public transport

Courtyard





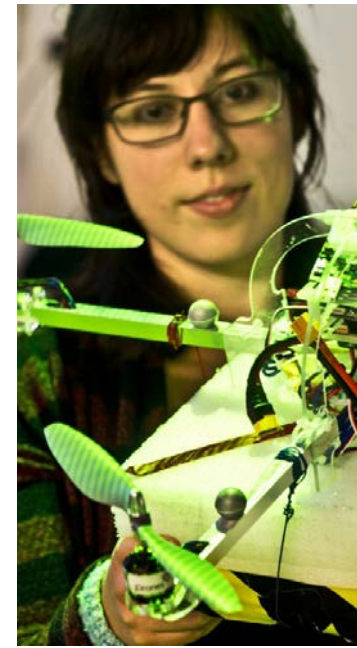
### KTH's 5 schools

- Architecture and the Built Environment
- Electrical Engineering and Computer Science
- Engineering Sciences
- Engineering Sciences in Chemistry, Biotechnology and Health
- Industrial Engineering and Management



**A range of subjects**

- Environmental Engineering
- Vehicle Engineering
- Product Innovation
- Life Science
- And a lot more



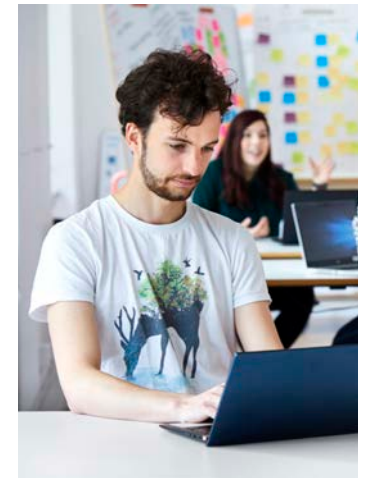
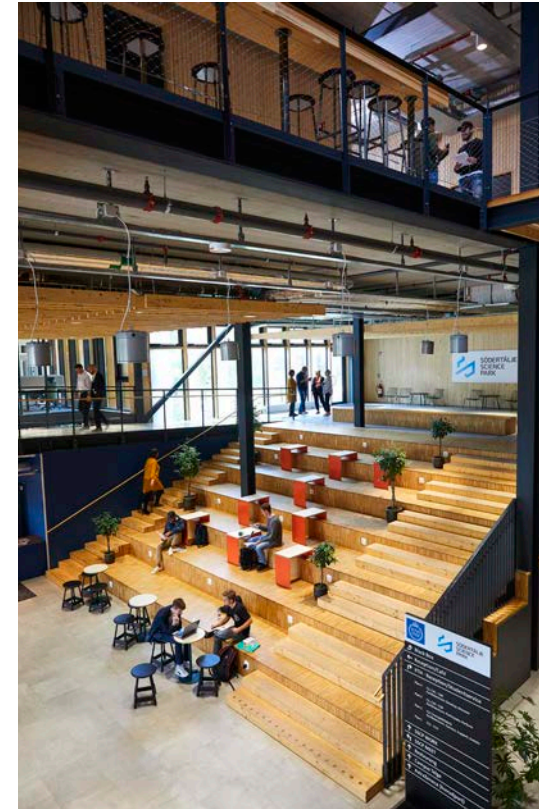
Over 1,000 courses in English on Master's level to choose from





- Lectures
- Seminars
- Teamwork
- Laboratory work
- Individual studies

A personal approach  
to education and an  
entrepreneurial spirit







**\$490-870**  
 Monthly rent varies depending on the accommodation type. KTH has student housing in several locations around Stockholm, all within 30 minutes from the main campus.



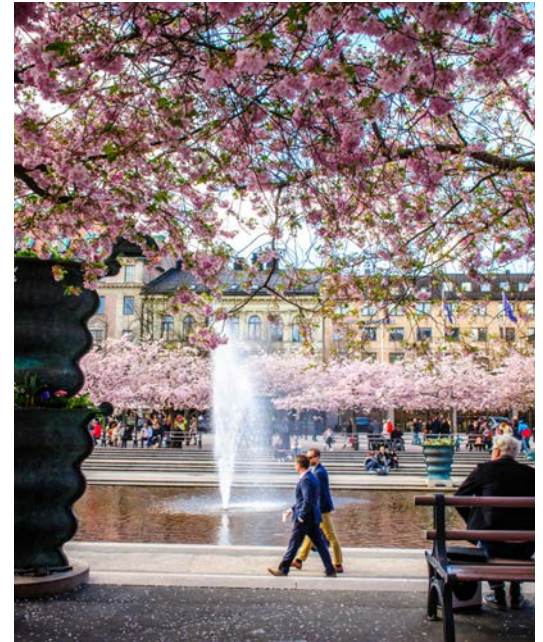
KTH helps exchange students find housing







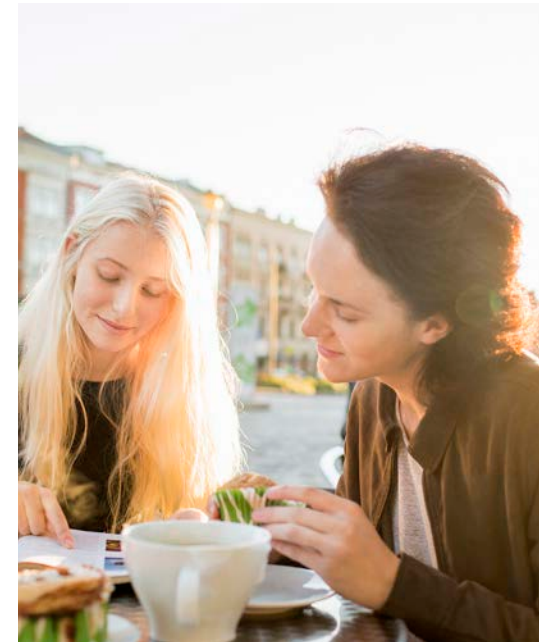
**\$840-1300**  
Monthly student budget including housing, food, medical care, insurance, travel, phone, internet, hobby and leisure







Introduction weeks,  
Swedish language classes,  
counselling for exchange  
students and activities by  
the student union







Before applying all exchange students must be selected by their home university



**15 April**  
for studies starting in late August  
(Autumn semester)

**15 October**  
for studies starting in January  
(Spring semester)







▶ Virtual campus tour







#### Photos

Ann-Sofi Rosenkvist/imagebank.sweden.se  
Björn Tesch/imagebank.sweden.se  
Cecilia Larsson Lantz/imagebank.sweden.se  
Conny Fridh/imagebank.sweden.se  
Faramarz Goshghy/imagebank.sweden.se  
Fredrika Berghult/NobelMediaAB/imagebank.sweden.se  
Helena Wahlman/imagebank.sweden.se  
Henrik Trygg/imagebank.sweden.se

Hjalmar Andersson/imagebank.sweden.se  
Jann Lipka  
Jonatan Stålhös/imagebank.sweden.se  
Kevin Kee Pil Cho/imagebank.sweden.se  
Lars Lundberg/imagebank.sweden.se  
Lena Granefelt/imagebank.sweden.se  
Lola Akinmade Åkerström/imagebank.sweden.se  
Melker Dahlstrand/imagebank.sweden.se

Ola Ericson/imagebank.sweden.se  
Simon Paulin/imagebank.sweden.se  
Stefan Berg/Folio/imagebank.sweden.se  
Susanne Walström/imagebank.sweden.se  
Ulf Grünbaum/Imagebank.sweden.se  
Ulf Lundin/imagebank.sweden.se  
Werner Nystrand/Folio/imagebank.sweden.se  
Wpcpey, Pete Stewart, Ekabhishek/Wikimedia Commons



## Exchange studies at KTH

[www.kth.se/studies](http://www.kth.se/studies)