



华南理工大学  
South China University of Technology



# CHASE YOUR DREAM

## 2023 SCUT INTERNATIONAL STUDENT



[sie.scut.edu.cn](http://sie.scut.edu.cn)

[sieweb@scut.edu.cn](mailto:sieweb@scut.edu.cn) | [studyatscut](https://www.studyatscut.com)

Tel: +86(0)20 39381048

+86(0)20 39381029

Fax: +86(0)20 39381078

E-mail: [sieinfo@scut.edu.cn](mailto:sieinfo@scut.edu.cn)



B1-205, School of International Education, South China University of Technology, University Town, Guangzhou, China, 510006

Apply Online: [www.scut.edu.cn/apply](http://www.scut.edu.cn/apply)

All right reserved and any unauthorized duplication will be prosecuted.

版权所有 翻版必究

PROSPECTUS 2023

「 GUANGZHOU · CHINA 」



# STUDY IN GUANGZHOU



## PURSuing YOUR STUDY IN GUANGZHOU OFFERS MORE THAN ACADEMIC ACHIEVEMENT IT OFFERS A RICH LIFESTYLE FILLED WITH MULTI-CULTURAL EXPERIENCES

Guangzhou, the capital of Guangdong Province, awarded "International Garden City" by the United Nations, is the bustling regional hub of Southern China. The Pearl River provides easy access to the nearby South China Sea, and it is conveniently located near both Hong Kong and Macao. Superior geographical location, vital transportation and communication facilities make Guangzhou China's Southern Gateway to the world.

Guangzhou cherishes its venerable 2,200-year history and highly developed culture. Vigorous economic development has enabled her to create unique architecture, a convenient metro system, excellent intercity transportation, a state-of-the-art international airport, and advanced exhibition centers. These contribute to the redefinition of Guangzhou as a fascinating, international metropolis.

Today, Guangzhou ranks among the top three most economically dynamic and flourishing cities in China, exerting influence on China, Southeast Asia, and the world. More than 100 of the top Fortune global 500 corporations have bases in Guangzhou. The city has successfully hosted the China Import and Export Fair over 100 times since 1957, and it has become a world trade showcase for all of China. At present, the daily international population in Guangzhou ranges from 80,000 to 120,000 and more than 23,000 international students studying in Guangdong Province.

Guangzhou is home to over twelve million people from across China and around the world, bringing rich cultural, ethnic, and religious diversity. It is the center and birthplace of Lingnan culture, which extends through Guangdong province and across

southeastern China, Hong Kong, Macao and into major Chinese communities all over the world. This vibrant cosmopolitan city boasts cinemas, theaters, museums, art galleries, restaurants, cafes, and abundant nightlife. Cantonese cuisine, especially dim sum, is one of the most famous and delicious Chinese Gourmet. Pursuing your education in Guangzhou offers more than academic achievement; it offers a rich lifestyle filled with multi-cultural experiences!

The city enjoys a sub-tropical climate with plentiful rainfall year-round. Average annual temperature is between 20 and 22 degrees Celsius. Abundant flowers thrive in this favorable climate giving it the nickname "City of Flowers". Guangzhou also boasts one of the largest botanical gardens in the world.



# CONTENTS

01

## INTRODUCTION

- 01 IN THE EYES OF INTERNATIONAL STUDENTS
- 05 INTRODUCTION
- 07 INTRODUCTION TO SOUTH CHINA UNIVERSITY OF TECHNOLOGY

09

## DEGREE PROGRAMS

- 09 UNDERGRADUATE PROGRAMS
- 20 BACHELOR OF ARTS IN TEACHING CHINESE TO SPEAKERS OF OTHER LANGUAGE
- 23 MASTER PROGRAMS
- 28 Ph.D PROGRAMS (4 Years)

32

## ENGLISH-MEDIUM PROGRAMS

- 32 UNDERGRADUATE PROGRAMS (4 YEARS)
- 37 MASTER PROGRAMS
- 44 PhD PROGRAMS

47

## NON-DEGREE PROGRAMS

- 47 INTERNATIONAL FOUNDATION PROGRAM (Chinese or English Medium) (1 Year)
- 48 GENERAL CHINESE PROGRAM
- 49 INTENSIVE CHINESE PROGRAM
- 50 INTERNATIONAL SUMMER CAMP PROGRAM WITH CREDITS

52

## SCHOLARSHIP

- 52 CHINESE GOVERNMENT SCHOLARSHIP FOR POSTGRADUATE STUDENTS
- 55 INTERNATIONAL CHINESE LANGUAGE TEACHERS SCHOLARSHIP
- 56 GUANGDONG PROVINCIAL GOVERNMENT OUTSTANDING INTERNATIONAL STUDENT SCHOLARSHIP
- 58 SCUT INTERNATIONAL SCHOLARSHIP FOR EXCELLENCE

60

## FEES FOR STUDYING AT SCUT

63

## UNIVERSITY FACILITIES

65

## APPLICATION PROCEDURE



# INTRODUCTION

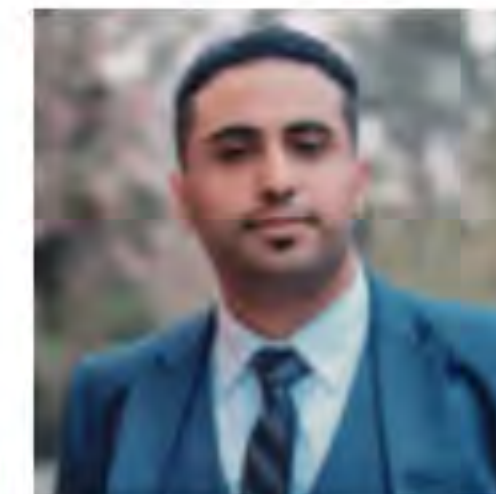
## IN THE EYES OF INTERNATIONAL STUDENTS



**KEES NATASHA NICOLE**

- 美国，硕士研究生
- 软件工程（英文授课）
- 中国政府奖学金获得者
- America, Master's Student
- Software Engineering (English Medium)
- Winner of Chinese Government Scholarship

One of the most incredible things about Guangzhou and SCUT in particular is the opportunity to meet and collaborate with amazing people from all walks of life. From top tier researchers and Fortune 500 companies to multi-million-dollar movie producers and corporate spies, Guangzhou has it all and SCUT can give you the tools and connections you need to enter into the top level of any industry and provide invaluable experiences and priceless memories. Academically, SCUT is one of the most prestigious universities in China, and their research community and facilities allow us to reach our full potentials and genuinely contribute to our respective fields. Another great aspect about SCUT is its vibrant foreign student body, represented by the ISU. The ISU hosts dozens of events every semester, in which we can network, have fun, and of course learn. So whether you're an aspiring scientist, a creative artist, or a budding entrepreneur, SCUT is a great choice to build a strong base for which to further your dreams. Finally, I'm grateful to the CSC and SCUT faculty who never gave me up, let me down, or ran around and deserted me.



**AL-SAMAWI AHMED MOHAMMED ABDULWALI**

- 也门，本科生
- 汉语国际教育
- 中国政府奖学金获得者
- Yemen, Undergraduate Student
- Teaching Chinese to Speakers of Other Language
- Winner of Chinese Government Scholarship

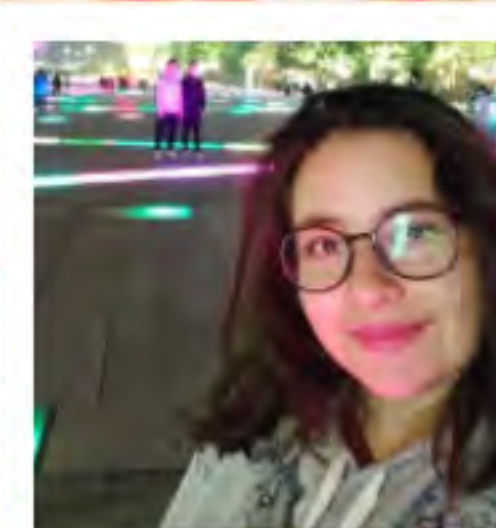
SCUT has a fantastic reputation; it is one of China's most famous universities. In a nutshell, it is my home away from my country where I have met the best friends and teachers of my life, they all are like a family to me. While being in SCUT, I can say that I have adored every moment I had spent there and every small detail of SCUT, starting from its high-quality education, the unique style of teaching, the extensive library, the class environment, the food in the canteens, and last but not least, the beautiful campus. To be honest, it was the campus and all of its surrounding nature what undoubtedly made me fall in love with SCUT. One thing I wanted to do when I came to SCUT, was joining ISU, I have made a bunch of unforgettable memories there; in my view, it was the best move I did that took my journey at SCUT to an even higher level.



**RIABYSHKINA ELENA**

- 俄罗斯，硕士研究生
- 软件工程（英文授课）
- 中国政府奖学金获得者
- Russia, Master's Student
- Software Engineering (English Medium)
- Winner of Chinese Government Scholarship

Изначально я приехала в Гуанчжоу изучать Китайский язык, но однажды гуляя по университетскому острову случайно оказалась в кампусе Южно-Китайского Технологического университета и из любопытства просмотрела специальности на английском языке. Мне так понравилась атмосфера этого места, что на следующий семестр я уже жила в кампусе и училась на Компьютерных технологиях. За 4 года учёбы на бакалавре я узнала много нового, подтянула мой разговорный и технический английский, и конечно встретила много прекрасных людей, которые стали моими хорошими друзьями. Сейчас я учусь на магистра программирования и с нетерпением жду новых учебных проектов и знаний.



**OLMEDO VELASQUEZ CARLA VERONICA**

- 厄瓜多尔，本科生
- 汉语国际教育
- 中国政府奖学金获得者
- Ecuador, Undergraduate Student
- Teaching Chinese to Speakers of Other Language
- Winner of Chinese Government Scholarship

SCUT es conocida por ser una de las mejores universidades de China, está ubicada en una de las ciudades más importantes en donde se pueden encontrar innumerables oportunidades de desarrollo personal. Sus programas son muy diversos y posee un entorno bastante amigable, confío en que cualquier estudiante proveniente de cualquier país sería capaz de cumplir sus aspiraciones académicas en SCUT. Una vez que estuve allí, sentí muy pronto que podría llegar a ser mi segundo hogar fácilmente. Mis profesores y compañeros fueron muy acogedores, me hacían sentir que nunca estaría sola; además los eventos organizados por ISU (International Student Union) me hicieron sentir que juntos éramos una gran familia, todos están siempre dispuestos a ayudarse mutuamente. Haber escogido SCUT para estudiar mi pregrado es definitivamente una de las mejores decisiones que he tomado, estoy segura de que aquí lograré convertirme en la mejor versión de mí misma, tanto académica como personalmente.



# IN THE EYES OF INTERNATIONAL STUDENTS



## YATSKEVITCH ANASTASIYA

- 白俄罗斯，本科生
- 电子商务
- 广东省政府来粤国际学生奖学金获得者
- Belarus, Undergraduate Student
- Electronic Commerce
- Winner of Guangdong Provincial Government Outstanding International Student Scholarship

Я обучаюсь в SCUT с 2018 года, пройдя языковой год, начала обучение по специальности E-commerce в 2019 году. Полтора года я проучилась оффлайн на кампусе, это был замечательный опыт, находясь полностью в китайской среде, общаясь с одногруппниками, накапливая опыт в культуре, и даже приобрела много китайских друзей, с которыми поддерживаю связь до сих пор! Наш университет является одним из лучших в провинции Гуандун, так же как и в целом Китае, все профессора - прекрасные учителя, которые готовы идти навстречу даже в условиях онлайн обучения, с ними легко найти общий язык. Даже находясь за пределами Китая, я получаю необходимое количество знаний, прохожу дополнительные онлайн-лекции, а так же состою в сообществе под названием ISU, тем самым поддерживая связь и с иностранными студентами. Учеба в SCUT - не одна из легких, требуется упорный труд, умение коммуницировать, понимание и принятие культуры, а в приобретении знаний помогут наши прекрасные высококвалифицированные учителя и профессора!



## GOH TZE XUAN

- 马来西亚，本科生
- 会展经济与管理
- 华南理工大学优秀国际学生奖学金
- 广东省政府来粤国际学生奖学金获得者
- Malaysia, Undergraduate Student
- Economics and Management of Convention and Exhibition
- Winner of SCUT International Scholarship for Excellence
- Winner of Guangdong Provincial Government Outstanding International Student Scholarship

SCUT is one of top achieving "211" and "985" project accredited university, luckily I choose SCUT as my first option to further my studies. I have to say environment of SCUT is quite nice, especially the design of school building. In this period of studying abroad, maybe we will feel lonely or homesick but not a reason to stop me to continue my study journey. In this period, I have known many friends, everyone at here is quite nice and easy to get along with, everyone will help each other. In the nutshell, I just want to say I've never regretted that I choosing SCUT!



## RODRIGUEZ DE VIGURI AZOR PAULA

- 西班牙，本科生
- 计算机科学与技术
- 中国政府奖学金获得者
- Spain, Undergraduate Student
- Computer Science and Technology
- Winner of Chinese Government Scholarship

En SCUT he vivido algunos de los mejores momentos de mi vida. Todavía recuerdo el día en que pisé por primera vez el enorme campus de nuestra Universidad. En ese momento me sentí abrumada por los edificios, la gente y la frondosa vegetación que lo rodeaba todo. Debería haber sido un momento muy feliz pero en mis entrañas había sentimientos encontrados, no tenía ni idea de qué me iban a deparar esos 4 años que estaba a punto de comenzar en aquel lugar. Ahora que miro hacia atrás, me hubiera encantado decirle a mi yo del pasado que estudiar en la Universidad Tecnológica del Sur de China iba a ser una de las mejores decisiones de mi vida. No será un camino fácil, tendrás que hacer frente a muchos desafíos: esa clase difícil, encontrar un grupo de amigos donde te sientes tú mismo o incluso superando la nostalgia y las diferencias culturales. Pero si algo he aprendido es que cuando la vida nos pone una piedra en el camino, siempre trae consigo una forma de quitarla. En SCUT siempre encontrarás a ese compañero carismático, a ese amigo generoso o profesor con un gran corazón que te ayudarán a plantarle cara a los problemas y harán que todo valga la pena. Las amistades para toda la vida que he creado y las extraordinarias experiencias que he vivido aquí siempre vivirán en mi memoria. Estoy eternamente agradecida a SCUT por lo que me ha regalado todo lo que aún queda por venir.



## ARNOLD FERNANDO BINGTARA

- 印度尼西亚，本科生
- 国际经济与贸易（英文授课）
- 广东省政府来粤国际学生奖学金获得者
- Indonesia, Undergraduate Student
- International Economics and Trade (English Medium)
- Winner of Guangdong Provincial Government Outstanding International Student Scholarship

SCUT adalah salah satu universitas top di China, juga universitas terkenal dengan reputasi yang luar biasa juga di Indonesia. Tahun ini kami memiliki sekitar 50 siswa yang berasal dari Indonesia yang belajar di SCUT di Town Campus serta di Kampus Wushan. Selain itu, SCUT sangat baik dalam menyediakan siswa secara akademis di dalam dan di luar universitas dengan bantuan ISU. International Student Union menyiapkan banyak event online di masa pandemi ini, untuk membuat mahasiswa lebih aktif. Jika Anda berencana untuk datang ke SCUT, Anda akan tahu pasti mengapa SCUT layak disebut sebagai peringkat ke-290 di Peringkat Dunia berdasarkan "2021 U.S. News Best Universities In the World".



# INTRODUCTION

## Top 1%

- Chemistry
- Materials Science
- Engineering
- Agricultural Sciences
- Physics
- Biology & Biochemistry
- Computer Science
- Environment/Ecology
- Clinical Medicine
- Mathematics
- Pharmacology & Toxicology
- Social Sciences, General

## Top 0.1%

- Engineering
- Material Chemistry
- Chemistry
- Agricultural Science
- Computer Science

## Top 10% subjects

7 subjects, including Light Industrial Technology and Engineering, Food Science and Engineering, Urban and Rural Planning, Material Science and Engineering, Architecture, and Chemical Engineering and Technology, are ranked in the top 10% among Chinese universities.



97.80%

The employment rate of graduates in 2021



19

There are 8 academicians of the Chinese Academy of Sciences

9 academicians of the Chinese Academy of Engineering

2 academicians from developed countries

151-200<sup>th</sup>

2021 Academic Ranking of World Universities (ARWU)

2,000+

International students

8,700,000

Collection volume of the university library

Top 17

Among the universities in mainland China

Top 22

Global academic ranking in the discipline of engineering

233

Key laboratories at national level



Top 2

Chinese universities for science and technology





# INTRODUCTION TO SOUTH CHINA UNIVERSITY OF TECHNOLOGY

The South China University of Technology (SCUT) is a leading educational institution in China. It is a public research-intensive university directly governed by the Chinese Ministry of Education. Located in the city of Guangzhou, a thriving metropolis in South China, the university today covers a total area of 391 hectares, consisting of three campuses: the Wushan Campus, the University Town Campus, and the Guangzhou International Campus.

The university was formerly known as the South China Institute of Technology, which was first founded in 1952. In 1960, eight years after the institute's establishment, it was selected by the state as a National Key University.

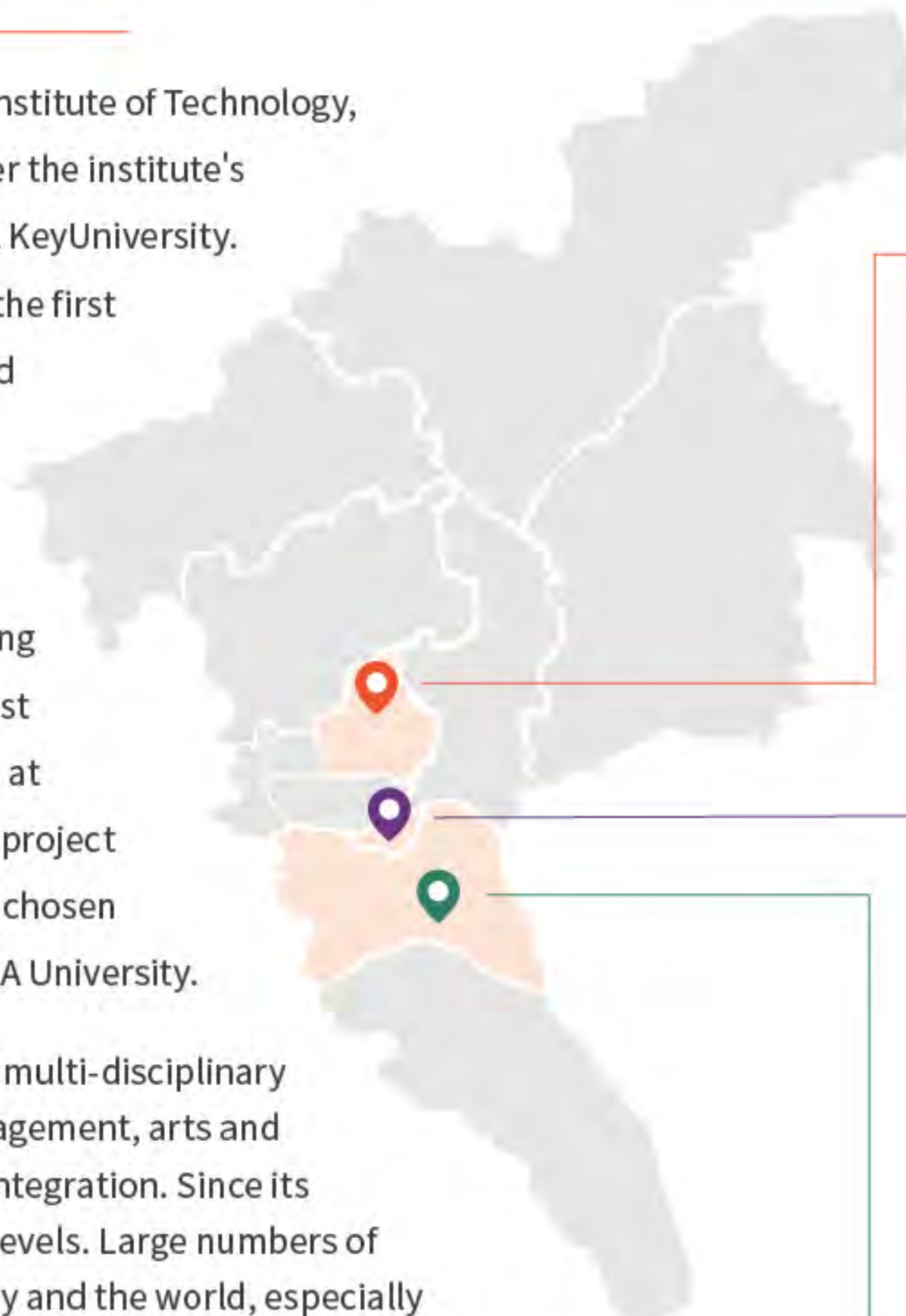
In 1981, it was authorized by the State Council as one of the first institutions in the country to confer doctoral degrees and master degrees. In 1988, the South China Institute of Technology was renamed the South China University of Technology. In 1995, SCUT was listed in China's "Project 211", a national endeavor aiming at strengthening top institutions of higher learning as a priority for the 21st century. In 2001, SCUT was listed in "Project 985", which at the time was the country's most significant educational project for funding world-class universities. Then in 2017, it was chosen into China's "Double World Class" project as a Category-A University.

After over 70 years of development, SCUT has become a multi-disciplinary university, merging science, engineering, business management, arts and social science, medicine and other disciplines into one integration. Since its founding, it has educated over 380,000 graduates at all levels. Large numbers of SCUT alumni have made key contributions to the country and the world, especially in economy, technology, and education.

In 2016, SCUT was ranked the world's top 300 universities by the Academic Ranking of World Universities, with its engineering placed at the 22nd place. According to Clarivate Analytics' Essential Science Indicators, SCUT has 12 subject areas ranked within the global top 1%, including chemistry; materials science; engineering; agricultural science; physics, biology and biochemistry; computer science; environment and ecology; clinical medicine; and social sciences, general.

Being determined to take a more active and efficient role in the global education, SCUT has established connections and partnerships with over 200 overseas universities and research institutions to promote student training and scientific research. There are more than 2,000 international students from more than 100 countries studying in SCUT's campuses. Most of them are taking courses in Chinese language and culture, natural science, engineering, and business management.

Entering a new stage of history, our faculty will continue to see student cultivation as the ultimate goal in our agenda. SCUT will always hold onto the belief that takes "the academy as the foundation, talented ones as the strength, open minds as the vitality, and the culture of the university as the energy to thrive and last". All these efforts are building SCUT as a top-ranking university in the country and a renowned world-class institution. Inspired by the university motto of "Study Extensively, Reflect Carefully, Discriminate Clearly, Practice Earnestly", we believe that SCUT will have more students who can create their places in the world and will be the institute that defines the university of tomorrow!



五山校区



大学城校区



广州国际校区





# DEGREE PROGRAMS

## UNDERGRADUATE PROGRAMS

- 4 Years, Architecture Related Majors: 5 Years.
- SCUT enrolls international students into Chinese medium undergraduate programs by divisions.
- In the first academic year, students will take the general curriculum of their divisions.
- In the second academic year, the specific programs/ majors will be confirmed according to relevant schools' rules.

### WUSHAN CAMPUS

Schools	Divisions	Programs/Majors	Core Curriculum
School of Mechanical and Automotive Engineering	Mechanical Engineering	Mechanical Engineering	• Engineering Thermodynamics
		Mechatronic Engineering	• Mechanical Principles
		Vehicle Engineering	• Mechanical Design
		Process Equipment and Control Engineering	• Fundamentals of Mechanical Manufacturing
		Materials Molding and Control Engineering	• Engineering Mechanics • Fundamentals of Mechanical Designing • Fluid Mechanics and Heat Transfer • Automatic Control Theory
School of Architecture	Architecture	Architecture	• Architectural Design
	Urban and Rural Planning	Urban and Rural Planning	• Principles of Architectural Design • Fundamentals of Architectural Design • Fine Arts
	Landscape Architecture	Landscape Architecture	• History of Chinese Architecture • History of Western Architecture • Computer-Aided Design

Schools	Divisions	Programs/Majors	Core Curriculum
School of Civil Engineering and Transportation	Civil Engineering	Civil Engineering	<ul style="list-style-type: none"> <li>• Theoretical Mechanics</li> <li>• Fluid Mechanics</li> <li>• Civil Engineering Construction</li> <li>• Project Management in Civil Engineering</li> <li>• Transport Planning</li> <li>• Engineering Hydrology</li> </ul>
		Water Resources Engineering	
		Intelligent Construction	
		Construction Management	
	Naval Architecture and Marine Engineering	Naval Architecture and Marine Engineering	
	Transportation	Traffic Engineering Transportation	
Civil Engineering (Bilingual: Need to Take the Entrance Examination)	Civil Engineering (Bilingual)		
School of Electric Power	Electric Specialty	Electrical Engineering and Automation	<ul style="list-style-type: none"> <li>• Engineering Thermodynamics</li> <li>• Heat Transfer Theory</li> <li>• Principles of Turbine</li> </ul>
		Energy and Power Engineering	<ul style="list-style-type: none"> <li>• Fundamentals of Mechanical Designing</li> <li>• Circuit</li> <li>• Visual Basic Program Design</li> </ul>
School of Electronic and Information Engineering	Information Engineering	Information Engineering	<ul style="list-style-type: none"> <li>• Circuit</li> <li>• Analog Electronic Technology</li> <li>• Digital Electronic Technology</li> <li>• Signal and System</li> <li>• Microcomputer System and Interface</li> <li>• Digital Signal Processing</li> <li>• Telecommunication Circuit</li> <li>• Fundamentals of Information Theory</li> </ul>



Schools	Divisions	Programs/Majors	Core Curriculum
School of Automation Science and Engineering	Automation Engineering	Automation	<ul style="list-style-type: none"> <li>Analog Electronic Technology</li> <li>Digital Electronic Technology</li> <li>Power Electronic Technology</li> </ul>
		Intelligent Science and Technology	<ul style="list-style-type: none"> <li>Introduction to Intelligent Control</li> <li>Computer Network and Telecommunication</li> </ul>
School of Materials Science and Engineering	Materials Engineering	Polymer Materials and Engineering	<ul style="list-style-type: none"> <li>Introduction to Materials Science and Engineering</li> <li>Fundamentals of Materials Science</li> <li>Solid Physics</li> <li>Thin Film Physics and Technology</li> <li>Optoelectronic Materials and Devices</li> </ul>
		Materials Science and Engineering	
	Functional Materials		
	Materials Engineering (Bilingual: Need to Take the Entrance Examination)	Materials Engineering (Bilingual)	
School of Chemistry and Chemical Engineering	Chemical Engineering and Pharmaceutics	Applied Chemistry	<ul style="list-style-type: none"> <li>Physical Chemistry</li> <li>Organic Chemistry</li> </ul>
		Chemical Engineering and Technology	<ul style="list-style-type: none"> <li>Inorganic Chemistry</li> <li>Organic Chemistry Experiment</li> <li>Biological Chemistry</li> </ul>
		Energy Chemistry Engineering	<ul style="list-style-type: none"> <li>Chemical Reaction Engineering</li> <li>Chemical Engineering thermodynamics</li> <li>Chemical Engineering Design</li> </ul>
		Pharmaceutical Engineering	<ul style="list-style-type: none"> <li>Automatic Control Technology and Theory</li> <li>Petroleum Processing</li> </ul>
School of Food Science and Engineering	Food Science and Engineering	Food Science and Engineering	<ul style="list-style-type: none"> <li>Food Analysis</li> <li>Principals of Food Processing and Storage</li> </ul>
		Food Quality and Safety	<ul style="list-style-type: none"> <li>Food Chemistry</li> </ul>
School of Light Industry and Engineering	Light Industry	Light Chemical Engineering	<ul style="list-style-type: none"> <li>Food Analysis</li> <li>Principals of Food Processing and Storage</li> </ul>
		Resources and Environment Science	<ul style="list-style-type: none"> <li>Food Chemistry</li> </ul>

Schools	Divisions	Programs/Majors	Core Curriculum
School of Mathematics	Mathematics	Mathematics and Applied Mathematics	<ul style="list-style-type: none"> <li>Mathematical Analysis</li> <li>Advanced Algebra</li> <li>Principles of Probability</li> <li>Mathematical Statistics</li> <li>Data Structure</li> </ul>
		Information and Computer Science	
		Information Management and Information Systems	
School of Physics and Optoelectronics Technology	Physics	Applied Physics	<ul style="list-style-type: none"> <li>Basic physics</li> <li>Quantum mechanics</li> <li>Electricity dynamics</li> <li>Thermodynamics and Statistical Physics</li> <li>Circuit and Analog Electronic Technology</li> <li>Digital Electronic Technology</li> <li>Solid State Physics</li> <li>Computational Physics</li> <li>Mathematical Physics Equation</li> <li>Semiconductor Physics and Devices</li> <li>Optics</li> <li>Optoelectronics</li> <li>Fundamentals of Information theory</li> <li>Signal and System</li> <li>Digital Signal Processing</li> <li>Principles of Communications</li> <li>Digital Electronic Technology</li> <li>Data Structure</li> </ul>
		Opto-electronics Information Science and Engineering	
School of Business Administration	Business Administration	Business Administration	<ul style="list-style-type: none"> <li>Micro-Economics</li> <li>Macro-Economics</li> <li>Principles of Management</li> <li>Accounting</li> <li>Principles of Marketing</li> <li>Organization Behavior</li> <li>Human Resource Management</li> <li>Financial Management</li> <li>Statistics for Management</li> <li>Operations Research</li> <li>Basic Accounting</li> <li>Intermediate Financial Accounting</li> <li>Advanced Financial Accounting</li> <li>Cost Accounting</li> <li>Management Accounting</li> <li>Auditing</li> <li>Accounting</li> <li>Information System</li> <li>International Accounting</li> </ul>
		Human Resources and Management	
		Marketing Management	
		Financial Management	
	Accounting	Accounting	
	Business Administration (Bilingual)	Business Administration (Bilingual)	



Schools	Divisions	Programs/Majors	Core Curriculum
School of Public Administration	Administrative Management	Administrative Management	<ul style="list-style-type: none"> <li>Principles of Management</li> <li>Principles of Political Science</li> <li>Economics</li> <li>Sociology</li> <li>Public Administration</li> <li>Administrative Law and Administrative Procedure Law</li> <li>Public Policy Analysis</li> <li>Public Human Resource Management</li> <li>Public Crisis Management</li> <li>The Network Social Governance</li> <li>Leadership Science</li> <li>Civil Service System</li> <li>The Administrative Document Writing</li> <li>Management Information Systems</li> <li>Operations Research</li> <li>Statistics</li> <li>Principles of Social Investigation and Data Analysis</li> </ul>
School of Foreign Languages	Business English	Business English	<ul style="list-style-type: none"> <li>Basic English</li> <li>Advanced English</li> <li>Translation Theory and Skills</li> <li>Interpretation</li> <li>Selected Readings in British Literature</li> <li>Selected Readings in American Literature</li> <li>English Listening Comprehension</li> <li>English Reading</li> <li>English Writing</li> <li>English Speaking</li> </ul>
	Japanese	Japanese	<ul style="list-style-type: none"> <li>Basic Japanese</li> <li>Advanced Japanese</li> <li>Chinese-Japanese Translation</li> <li>Chinese-Japanese Interpretation</li> <li>Selected Readings of Japanese Literature</li> <li>Japanese Reading</li> <li>Japanese Listening Comprehension</li> <li>Japanese Writing</li> <li>Japanese Speaking</li> </ul>

Schools	Divisions	Programs/Majors	Core Curriculum
School of Physical Education	Sports Training (Please confirm the specific majors with us)	Sports Training (Please confirm the specific majors with us)	<ul style="list-style-type: none"> <li>Sports Anatomy</li> <li>Athletic Physiology</li> <li>Athletic Training</li> <li>Athletic Psychology</li> <li>Sport Biomechanics</li> <li>Sports Medicine</li> <li>Sports Scientific Research Methods</li> <li>Special Teaching Theory and Practice of Training</li> <li>General Teaching Theory and Practice of Training</li> </ul>

## UNIVERSITY TOWN CAMPUS

Schools	Divisions	Programs/Majors	Core Curriculum
School of Computer Science and Engineering	Computer Science	Computer Science and Technology	<ul style="list-style-type: none"> <li>Advanced Language Program Design (C++)</li> <li>Data structure</li> <li>Introduction to Computer Science</li> <li>Database</li> <li>Digital Logic</li> <li>Discrete Mathematics</li> </ul>
		Network Engineering	
Information Security			
	Computer Science and Technology (English Medium)	Computer Science and Technology (English Medium)	
School of Software Engineering	Software Engineering	Software Engineering	<ul style="list-style-type: none"> <li>Introduction to Computer and Software Engineering</li> <li>Discrete Mathematics</li> <li>Digital Logic</li> <li>Data Structure and Algorithm</li> <li>Operating System</li> <li>Compiling Technology</li> <li>Computer Network</li> <li>Database System</li> <li>Software Architecture</li> <li>Software Testing and Maintenance</li> </ul>
School of Environment and Energy	Environmental Science and Engineering	Environmental Engineering	<ul style="list-style-type: none"> <li>Fundamentals of Computer</li> <li>College Physics</li> <li>College Physical Experiment</li> <li>Organic Chemistry</li> <li>Visual Basic Program Design</li> <li>Environmental Monitoring</li> </ul>
		Environmental Science and Engineering	
Environmental Engineering (Bilingual)	Environmental Engineering (Bilingual)		



Schools	Divisions	Programs/Majors	Core Curriculum
School of Biology and Biological Engineering	Biological Sciences	Bioengineering	<ul style="list-style-type: none"> <li>Organic Chemistry</li> </ul>
		Biopharmaceutics	<ul style="list-style-type: none"> <li>Biochemistry and Molecular Biology</li> <li>Modern Biochemical Technology</li> </ul>
		Biotechnology	<ul style="list-style-type: none"> <li>Inorganic Chemistry</li> <li>Analytical Chemistry</li> </ul>
School of Economics and Finance	Economics	Economics	<ul style="list-style-type: none"> <li>Macroeconomics</li> </ul>
		Finance	<ul style="list-style-type: none"> <li>Microeconomics</li> </ul>
		International Economics and Trade	<ul style="list-style-type: none"> <li>Technical Economics</li> <li>Public Economics</li> <li>Political Economics</li> <li>Industry Economics</li> </ul>
	Fintech	Fintech	<ul style="list-style-type: none"> <li>Finance</li> <li>Finance Theory</li> <li>Principles of Management</li> <li>Financial Engineering</li> <li>Marketing</li> <li>Securities Investment Analysis</li> <li>Central Banking</li> <li>Commercial Bank Management</li> <li>Financial Derivatives</li> <li>Theory and Practice Principle of International Trade</li> <li>International Finance</li> <li>International Settlement</li> <li>Statistics</li> <li>Econometrics</li> </ul>
	International Economics and Trade (English Medium)	International Economics and Trade (English Medium)	
Department of Tourism Management	Tourism Management	Tourism Management	<ul style="list-style-type: none"> <li>Tourism Management</li> <li>Accounting Principle</li> <li>Information Technology Exhibition Site</li> <li>Tourist Electronic Map Technology</li> <li>Exhibition Project Management</li> <li>Strategic Management</li> <li>Hotel Management</li> <li>Tourism Planning</li> <li>Exhibition Planning and Management</li> <li>Tourism Landscape Design</li> <li>Exhibition Engineering Management</li> <li>Food and Beverage Operations and Management</li> <li>Exhibition Innovation Theory and Practice</li> <li>Human Resource Management</li> </ul>
		Economics and Management of Convention and Exhibition	

Schools	Divisions	Programs/Majors	Core Curriculum
Department of Electronic Business	Electronic Commerce	Electronic Commerce	<ul style="list-style-type: none"> <li>Introduction to E-Commerce</li> <li>Principle and Application of ERP</li> <li>Consumer Behavior</li> <li>Electronic Commerce Front</li> <li>Project Management</li> <li>the Internet Finance</li> <li>Supply Chain Management</li> <li>Fundamentals of Logistics</li> <li>Logistics Distribution Theory and Application</li> <li>Logistics Cost Management</li> <li>Purchasing and Supply Management</li> <li>International Logistics</li> <li>the Logistics Information System Design</li> <li>Distribution Center Design and Management</li> <li>Intelligent Logistics System Design</li> </ul>
		Logistics Engineering	
School of Journalism and Communication	Journalism and Communication	Journalism	<ul style="list-style-type: none"> <li>Fundamentals of journalism</li> <li>Network communication</li> <li>Audiovisual Production</li> <li>Principles of Advertising</li> <li>Basic Photography</li> <li>Basic Cinematography</li> <li>Introduction to Mass Media</li> <li>Introduction to Brand</li> <li>Integrated Marketing Communication</li> <li>Public Relations</li> <li>Survey and Statistical Analysis</li> <li>Brand Strategy Management</li> </ul>
		Communication Studies	
		Advertising	
School of Law	Law	Law	<ul style="list-style-type: none"> <li>Introduction to Jurisprudence</li> <li>Professional Ethics of Law</li> <li>Legal Logic</li> <li>Homology</li> <li>Constitution</li> <li>Generality of Criminal Law</li> <li>Generality of Civil Law</li> <li>Business Law</li> <li>Economic Law</li> <li>Intellectual Property Law</li> </ul>
		Intellectual Property	



Schools	Divisions	Programs/Majors	Core Curriculum
School of Arts	Musicology	Musicology	<ul style="list-style-type: none"> <li>• Solfeggio</li> <li>• Harmony</li> <li>• Musical Form and Works Analysis</li> <li>• Introduction to Music</li> <li>• History of Chinese Music</li> <li>• History of Western Music</li> </ul>
	Dancing	Dancing	
	Music Performance	Music Performance	
School of Design	Industrial Design	Industrial Design	<ul style="list-style-type: none"> <li>• Design sketch</li> <li>• Chromatology</li> <li>• Introduction to Industrial Design</li> <li>• History of Industrial Design</li> <li>• Presentation Technology</li> <li>• Methodology for Product and Process Design</li> <li>• Industrial Design</li> <li>• Engineering Fundamentals</li> <li>• Basis of design</li> <li>• Introduction to design</li> <li>• History of design</li> </ul>
	Environmental Design	Environmental Design	
	Product Design	Product Design	
	Costume Design	Costume Design	
School of International Education	Teaching Chinese to Speakers of Other Language	Teaching Chinese to Speakers of Other Language	<ul style="list-style-type: none"> <li>• Intermediate Chinese</li> <li>• Advanced Chinese</li> <li>• Chinese Speaking</li> <li>• Chinese Reading</li> <li>• Chinese Listening</li> <li>• Comprehension</li> <li>• Newspaper and Periodical Reading</li> <li>• Applied Writing</li> <li>• Academic Writing</li> <li>• Introduction to China</li> <li>• Introduction to Chinese Culture</li> <li>• Business Chinese</li> <li>• Overview of Chinese Culture</li> </ul>

## INTERNATIONAL CAMPUS

Schools	Divisions	Programs/Majors	Core Curriculum
School of Biomedical Sciences and Engineering*	Biomedical Engineering(Bilingual)	Biomedical Engineering (Bilingual)	<ul style="list-style-type: none"> <li>• Fundamental Biomaterials</li> <li>• Modern Testing Methods for Materials</li> <li>• Circuit and Electronic Technology</li> <li>• Signal and System</li> <li>• Digital Signal Processing</li> <li>• Inorganic and Analytic Chemistry</li> <li>• Organic Chemistry</li> <li>• Biomechanics</li> <li>• Cell Biology</li> </ul>

\*The tuition fee and admission requirements are subject to international campus' s standards.

## ADMISSION REQUIREMENTS

- ① High school graduate with good record or equivalent certificate. Those who have not graduated from high school, submit a Pre-graduation Certificate, or a testimonial which shows your expected graduation time and present your original high school certification, transcripts, and their translations when you register;
- ② Language Requirements for Chinese Medium Programs (The language proficiency certificate must remain valid at the time of admission):
  - HSK Band 4 with 180 scores or above for Science and Engineering;
  - HSK Band 5 with 180 scores or above for Liberal Arts, Economics & Management Studies, Foreign Languages, Arts, Design, Architecture and Sport Training;
  - HSK Band 4 with 180 scores or above for Teaching Chinese to Speakers of Other Language.





- ③ Language Requirements for English Medium Programs (The language proficiency certificate must remain valid at the time of admission).

**For non-English speaking countries:**

- TOEFL IBT/ MyBest® Scores 68 or above;
- TOEFL Essentials 7.5 or above;
- IELTS 5.5 or above;
- Other equivalent English language qualifications.

**For non-English speaking countries**

Applicants who seek exemption from submitting one of the above English Language competency certificates must show that they are a citizen or permanent resident of an English-speaking country; and have obtained their highest level of formal education from an institution where English is the medium of instruction and assessment and provide documented evidence of this when submitting their high school or college qualification certificate.

- ④ Language Requirements for Bilingual Program (The language proficiency certificates must remain valid at the time of admission):
- HSK Band 4 with 180 scores or above for Science or Engineering studies; HSK Band 5 with 180 scores or above for Economics & Management Studies.
  - TOEFL IBT 68 or above; IELTS 5.5 or above; Other equivalent English language qualifications.
- ⑤ Those who do not have an HSK certificate can study in the Chinese Language program at SCUT prior to their degree programs until the required certificate has been completed.
- ⑥ The Foreigner Physical Examination Form should be filled in Chinese or English.
- ⑦ Two recommendation letters.
- ⑧ To apply for music related programs, please submit a DVD or CD of your live performance. To apply for architecture related programs, please submit a portrait and a still life you have drawn. For design related programs, please submit two original designs.
- ⑨ Applicants, who apply for Civil Engineering (Bilingual) or Materials Engineering (Bilingual) with conditional offers, should attend the math and English test held by professional schools. If the applicants cannot pass the test, you can transfer to other English medium programs or other universities.
- ⑩ Applications for changing majors could be accepted within two weeks after the semester begins.

### APPLICATION DEADLINE

Before 30 June each year.

### APPLICATION PROCEDURE

Refer to the last page.

### STUDY STARTING TIME

September of each year.

Note:  
The above information is subject to changes with further notices.

# BACHELOR OF ARTS IN TEACHING CHINESE TO SPEAKERS OF OTHER LANGUAGE

## PROGRAM OVERVIEW

Chinese language courses include Basic Chinese, Intermediate Chinese, Advanced Chinese, Chinese Speaking, Chinese Reading, Chinese Listening, Newspaper Reading, Basic Writing, Dissertation Writing, Chinese Culture, IT Chinese, Scientific Chinese, and Intercultural Communication etc.

The Bachelor of Arts in Teaching Chinese to Speakers of Other Language is designed for students who wish to equip themselves with interdisciplinary talents in language communication using a thorough knowledge of the Chinese language and a deep understanding of the social and cultural aspects of China. Based on the distinguished record of teaching and research above Schools, the program offers 3 modules in International Relation, Chinese for Business and Trade, and Teaching Chinese to Speakers of Other Language.

In each program, students study Chinese for the first two years. Upon acquisition of a language foundation, students may then continue to the final two years for further systematic study.

## PROGRAM SPECIALITY

- It offers major courses of MA in Journalism and Communication (International Dissemination of Chinese) as elective courses for those students who are intended to continue their master study in this field.
- It has its own Public Diplomacy and Intercultural Communication Research Center.
- It owns multiple entrepreneurship centers, such as Stem Cell Technology Corporation International Student Innovation and Entrepreneurship Center.
- It provides alumni enterprise internship opportunities.

## GRADUATION & CAREER

The Bachelor of Arts in Teaching Chinese to Speakers of Other Language Degree requires the HSK Level 5 with scores above 180, the completion of a minimum of 160 credits, successfully defended a dissertation, and satisfactory academic performance. Eligible graduates may receive a Higher Education Certificate and a Bachelor's Degree from SCUT.

Graduates with Chinese-language and subject-oriented skills are highly sought-after in the fields of international business and trade, tourism, hotel management, cultural communication, teaching Chinese, education, translation and interpretation, diplomacy, and foreign affairs.



## STUDY DURATION

4 Years

\*You can be allowed to start from the second academic year depending on your Chinese proficiency. Please refer to Entry Requirements for details.

## ADMISSION REQUIREMENTS

### For 1st Year Entrance:

Applicants must have graduated from high school; Have a score of 180 or above on the New HSK Level 4.

### Start from the 2nd Year:

- Applicants must have graduated from high school;
- Have at least 1 year of university coursework (required to provide 1 year's university transcript); Have a score of 180 or above on the New HSK Level 5.

## DEGREE PROGRAMS MODULES

### Chinese for Business and Trade

- ① Course Aim: This module provides students with the means to cultivate an excellent understanding of the social and cultural aspects of China and also equips them with applicable knowledge of the Chinese language to facilitate a better handling of business and trade, broadening their career paths in this modern international business market.
- ② Course Structure: Students in this module take Chinese language courses in Year 1 and Year 2 to achieve competent communication skills. In Year 3 and Year 4, students proceed to studies in business and trade for deeper specialization in international trade, business development of China, and Chinese business culture.
- ③ Curriculum: Including, but not limited to Survey of Chinese International Trade, Chinese Economics and Geography, Applicable International Trade, English for Business and Trade, Negotiation in International Business, E-Business, Culture of Chinese Business and Trade, Lectures in Business, and Trade.
- ④ Practicum: Language practice and various opportunities for field work in participating companies and organizations.

### Teaching Chinese to Speakers of Other Language

- ① Course Aim: This module provides students with the means to cultivate excellence in Chinese language skills, Chinese culture, and linguistics. Students master the theories and methodologies of language acquisition, which provides the competence necessary to teach Chinese as a foreign language.
- ② Course Structure: Students in this module take Chinese language courses in Year 1 and Year 2 to achieve competent communication skills. In Year 3 and Year 4, students proceed to studies in teaching Chinese as a foreign language to strengthen expertise in Chinese linguistics, literature, and culture. Students gain knowledge in the pedagogy and methodology of teaching Chinese as a foreign language.
- ③ Curriculum: Modern Chinese, Classical Chinese, Chinese Literature, Outline of Chinese Culture, Differences between Chinese and Foreign Cultures, Outline of Teaching Chinese as a Foreign Language, Pedagogy of Teaching Chinese as a Foreign Language.
- ④ Practicum: Internship on language teaching.

### International Relation

- ① Course Aim: This module provides students with the means to cultivate an excellent understanding of world politics and economics, international relation, sociology, intercultural communication, and foreign management and equips them with applicable knowledge of foreign public affairs, transnational business, international issue analysis and reporting.
- ② Course Structure: Students in this module take Chinese language courses in Year 1 and Year 2 to achieve competent communication skills. In Year 3 and Year 4, students proceed to studies in international relation for deeper specialization in foreign public affairs, transnational business, international issue analysis and reporting.
- ③ Curriculum: Overview of Chinese National Conditions, The history of China diplomacy, Comparative Analysis of Electoral System, Intercultural Communication, Principles of Management, Principles of Politics Science, Organizational Behavior, Contemporary Chinese Business Negotiation.
- ④ Practicum: Language practice, business internship, fieldwork in local governments and newspaper companies, and translation practicum.

Please note that the modules, requirements, and other information are subject to the latest notices.





# MASTER PROGRAMS (2 or 3 Years)

The Academic Master's Degree is offered in 90 majors from 8 disciplines. The Academic Master's Degree of SCUT is established in accordance with a traditional discipline curriculum including Philosophy, Economics, Law, Education, Literature, Science Engineering and Administration.

## WUSHAN CAMPUS

Schools	Programs/Majors
School of Mechanical and Automotive Engineering	Mechanical Engineering
	Material Science and Engineering
	Power Engineering and Engineering Thermophysics
	Safety Science and Engineering
School of Architecture	Architectural History and Theory
	Architectural Design and Theory
	Architectural Technology and Science
	Landscape Architectonics
	Urban and Rural Planning
School of Civil Engineering and Transportation	Mechanics
	Civil Engineering
	Road Railway Engineering
	Traffic Information Engineering Control
	Transportation Planning Management
School of Electronic and Information Engineering	Naval Architecture and Ocean Engineering
	Electronic Science and Technology (Circuits and Systems, Electromagnetic Field and Microwave Technology)
School of Electric Power Engineering	Information and Communication Engineering (Chinese Medium, 3 Years; English Medium, 2 Years)
	Power Engineering and Engineering Thermophysics (Engineering Thermophysics, Thermal Power Engineering)
School of Electric Power Engineering	Electrical Engineering (Power System and its Automation, Power Electronics and Power Drives, Electric Machines and Electric Apparatus, Theory and New Technology of Electrical Engineering, High Voltage and Insulation Technology)

Schools	Programs/Majors
School of Automation Science and Engineering	Control Science and Engineering
	Electrical Computer and Engineering (English Medium, 2 Years)
School of Material Science and Engineering	Chemistry (Polymer Chemistry and Physics)
	Biomedical Engineering
	Materials Science and Engineering
School of Chemistry and Chemical Engineering	Chemistry (Inorganic Chemistry, Analytical Chemistry, Physical Chemistry, Organic Chemistry)
	Chemical Engineering and Technology (Chemical Engineering, Chemical Technology, Biochemical Engineering, Applied Chemistry, Industrial Catalysis, Energy Chemistry Engineering)
School of Food Science and Engineering	Light Industry Technology and Engineering (Sugar Engineering)
	Food Science and Engineering (Chinese Medium, 3 Years; English Medium, 2 Years)
School of Light Industry and Engineering	Light Industry Technology and Engineering (Pulp and Paper Engineering, Biomass Science and Engineering)
School of Mathematics	Fundamental Mathematics
	Computing Mathematics
	Probability Theory and Mathematical Statistics
	Applied Mathematics
School of Physics and Optoelectronics	Operational Research and Cybernetics
	Theoretical Physics
	Condensed Matter Physics
	Optics
	Acoustics
School of Business Administration	Electronic Science and Technology (Physical Electronics)
	Management Science and Engineering
	Accounting
	Enterprise Management
	Technical Economics and Management
School of Business Administration	MBA (English Medium, 2 Years)

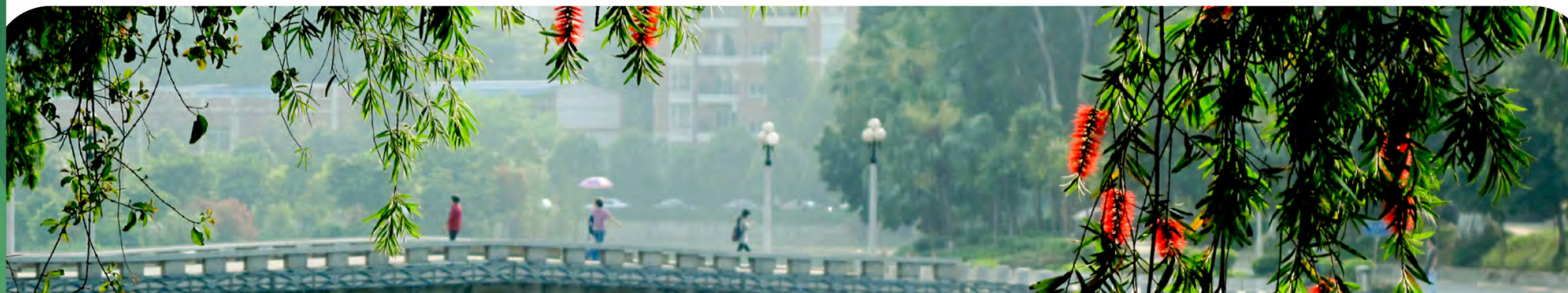


Schools	Programs/Majors
School of Marxism	Marxism Theory
School of Foreign Languages	Foreign Language and Literature
School of Public Administration	Public Management (Public Administration, Educational Economics and Management, Social Security, Land Resource Management ) (Chinese Medium, 3 Years)
School of Physical Education	Sports Science

## UNIVERSITY TOWN CAMPUS

Schools	Programs/Majors
School of Computer Science and Engineering	Computer Science and Technology
School of Software Engineering	Software Engineering (Chinese Medium, 3 Years; English Medium, 2 Years)
School of Environment and Energy	Environmental Science and Engineering
School of Biology and Biological Engineering	Biology
	Light Industry Technology and Engineering (Fermentation Engineering)
School of Economics and Finance	Regional Economics
	Finance
	Industrial Economics
	International Trade
	Econometrics

Schools	Programs/Majors
Department of Tourism Management	Tourism Management
Department of Electronic Business	Management Science and Engineering
School of Journalism and Communication	Journalism and Communication (Chinese Teaching and Communication)
School of Law	Jurisprudence
	Constitution Law and Administrative Law
	Criminal Jurisprudence
	Civil Law
	Litigation Law
	Economical Law
	International Law
	Intellectual Property
School of Arts	Music and Dance
School of Design	Design (Master in Engineering)
	Design (Master in Arts)





## INTERNATIONAL CAMPUS

Schools	Programs/Majors
School of Biomedical Sciences and Engineering	Biomedical Engineering

### APPLICATION REQUIREMENTS

- ① Bachelor's degree diploma and transcripts with good record. Those who have not graduated from undergraduate program, submit a pre-graduation certificate, or a testimonial which shows your expected graduation time and present your original certification, transcripts, and translations when you register.
- ② Language requirements for Chinese Medium programs (language certificate must be valid for the latest 2 years):
  - HSK Band 4 with 180 scores or above for Science or Engineering studies;
  - HSK Band 5 with 180 scores or above for Liberal Arts, Economics, Arts and Design or Management studies HSK Band 5 with 210 scores or above for Journalism and Communication (Chinese Teaching and Communication).
- ③ Language requirements for English Medium programs (only for non-English speaking countries) (language certificate must be valid for the latest 2 years):
  - TOEFL iBT/ MyBest® Scores 80 or above;
  - TOEFL Essentials 8 or above;
  - IELTS 6.0 or above;
  - Other equivalent English language qualifications.
- ④ Those students who are exempt from submitting an English Language Certificate must meet the following conditions:
  - A citizen of an English-speaking country;
  - Obtained the highest-level degree of education from an institution operating in English and submitting a proof of English instruction.
- ⑤ Those who do not have an HSK certificate can study in the Chinese Language program at SCUT prior to their degree programs until the required certificate has been completed.
- ⑥ To apply for music related programs, please submit a DVD or CD of your live performance. To apply for architecture related programs or design related programs, please submit at least two sketches and two pieces of color paintings.
- ⑦ Two recommendation letters.



- ⑧ A pre-acceptance letter signed by SCUT professors or associate professors.
- ⑨ A study or research plan written in Chinese/English (1000 words minimum).
- ⑩ Original copy of Foreigner Physical Examination Form (must be filled out in Chinese or English).
- ⑪ For MBA program applicants, must meet one of the following conditions and pass the evaluation of MBA center:
  - Obtained at least 3 years of work experiences after the undergraduate degree
  - Obtained at least 2 years of work experiences after the postgraduate degree
  - Applications of changing majors will not be accepted two weeks after semester begins.

### APPLICATION DEADLINE

Before 15 June each year

### APPLICATION PROCEDURE

Refer to the last page

### STUDY STARTING TIME

September of each year

Note:  
The above information is subject to changes with further notices.

## Ph.D PROGRAMS (4 YEARS)

### WUSHAN CAMPUS

Schools	Programs/Majors
School of Mechanical and Automotive Engineering	Mechanical Engineering
	Material Science and Engineering (Metal Material and Process Engineering, Polymer Material and Process Engineering)
	Power Engineering and Engineering Thermophysics (Chemical Process Equipment)
School of Architecture	Architectural History and Theory
	Architectural Design and Theory
	Architectural Technology and Science
	Urban and Rural Planning
	Landscape Architectonics



Schools	Programs/Majors
School of Civil Engineering and Transportation	Mechanics
	Geotechnical Engineering
	Structural Engineering
	Disaster-Prevention and Reduction Engineering and Protective Engineering
	Bridge Tunnel Engineering
	Road Railway Engineering
	Traffic Information Engineering Control
	Transportation Planning Management
	Naval Architecture and Ocean Engineering
School of Electronic and Information Engineering	Electronic Science and Technology (Circuits and Systems, Electromagnetic Field and Microwave Techniques)
	Information and Communication Engineering (Chinese/ English Medium)
School of Electric Power Engineering	Power Engineering and Engineering Thermophysics (Engineering Thermophysics, Thermal Power Engineering)
	Electrical Engineering (Power System and its Automation, Power Electronics and Power Drives, Electric Machines and Electric Apparatus, Theory and New Technology of Electrical Engineering, High Voltage and Insulation Technology)
School of Automation Science and Engineering	Control Science and Engineering (Chinese/ English Medium)
School of Material Science and Engineering	Chemistry (Chemistry and Physics of Polymers)
	Materials Science and Engineering (Chinese/ English Medium)
	Biomedical Engineering
School of Chemistry and Chemical Engineering	Chemistry (Inorganic Chemistry, Analytical Chemistry, Physical Chemistry, Organic Chemistry)
	Chemical Engineering and Technology (Chemical Engineering, Chemical Technology, Biochemical Engineering, Applied Chemistry, Industrial Catalysis, Energy Chemistry Engineering)
School of Food Science and Engineering	Light Industry Technology and Engineering (Sugar Engineering)
	Food Science and Engineering (Chinese/English Medium)
School of Light Industry and Engineering	Light Industry Technology and Engineering (Pulp and Paper Engineering, Biomass Science and Engineering)
School of Mathematics	Mathematics
School of Physics and Optoelectronics	Physics
	Electronic Science and Technology (Physical Electronics)

Schools	Programs/Majors
School of Marxism	Marxism theory
School of Business Administration	Management Science and Engineering
	Accounting
	Corporate Management
	Technical Economics and Management
School of Public Administration	Public Management

## UNIVERSITY TOWN CAMPUS

Schools	Programs/Majors
School of Computer Science and Engineering	Computer Science and Technology
School of Software Engineering	Software Engineering
School of Environmental and Energy	Environmental Science and Engineering (Chinese/ Bilingual Medium)
School of Biology and Biological Engineering	Biology
	Light Industry Technology and Engineering (Fermentation Engineering)
School of Economics and Finance	Applied Economics
Department of Electronic Business	Management Science and Engineering
Department of Tourism Management	Tourism Management

## INTERNATIONAL CAMPUS

Schools	Programs/Majors
School of Biomedical Sciences and Engineering	Biomedical Engineering

## APPLICATION REQUIREMENTS

- ① Master's degree diploma and transcripts with good record. Those who have not graduated from master program, submit a pre-graduation certificate, or a testimonial which shows your expected graduation time and present your original certification, transcripts, and translations when you register.



- ② Language requirements for Chinese Medium programs (language certificate must be valid for the latest 2 years):
  - HSK Band 4 with 180 scores or above for Science or Engineering studies;
  - HSK Band 5 with 180 scores or above for Liberal Arts, Economics, or Management studies.
- ③ Language requirements for English Medium programs (only for non-English speaking countries) (language certificate must be valid for the latest 2 years):
  - TOEFL iBT/ MyBest® Scores 80 or above;
  - TOEFL Essentials 8 or above;
  - IELTS 6.0 or above;
  - Other equivalent English language qualifications.
- ④ Language requirements for Bilingual Medium programs:
  - HSK Band 4 with 180 scores or above;
  - TOEFL iBT/ MyBest® Scores 80 or above; TOEFL Essentials 8 or above; IELTS 6.0 or above; Other equivalent English language qualifications (only for non-English speaking countries).
- ⑤ Those students who are exempt from submitting an English Language Certificate must meet the following conditions:
  - A citizen of an English-speaking country;
  - Obtained the highest-level degree of education from an institution operating in English and submitting a proof issued by the institution.
- ⑥ Those who do not have an HSK certificate can study in the Chinese Language program at SCUT prior to their degree programs until the required certificate has been completed.
- ⑦ To apply for architecture related programs or design related programs, please submit at least 1 character sketch and 1 still life sketch.
- ⑧ Two recommendation letters from professors or associate professors.
- ⑨ A pre-acceptance letter signed by SCUT professors or associate professors.
- ⑩ A study or research plan written in Chinese/English (1000 words minimum).
- ⑪ Abstract(s) of graduation thesis(es) or published paper(s).
- ⑫ Applications of changing majors will not be accepted two weeks after semester begins.

### APPLICATION DEADLINE

Before 15 June each year.

### STUDY STARTING TIME

September of each year.

### APPLICATION PROCEDURE

Refer to the last page.

**Note:**

The above information is subject to changes with further notices.



## UNDERGRADUATE PROGRAMS (4 YEARS)

### COMPUTER SCIENCE AND TECHNOLOGY

#### PROGRAM OVERVIEW

International students undertaking this program will:

- Master the fundamental knowledge and theoretical principles underpinning computer science;
- Acquire knowledge and operating processes of core technologies and hardware; Be made familiar with the latest frontier knowledge and emerging technologies in computer science;
- Be trained to develop their research skills, and the creative and practical application of research;
- Adopt professional, entrepreneurial, and international perspectives in the application of their computer science skills and knowledge;
- Acquire, through theory and practice, cross-cultural literacy and, improved proficiency in English, and enhanced Chinese language skills.

#### MAIN COURSES

The core courses are:

Calculus, Linear Algebra, Discrete Mathematics, Chinese Language, Chinese Culture, Data Structure, Database, Advanced Language Program Design (C++), Operating System, Principles of Compiling, Computer Network, Software Engineering, Artificial Intelligence.

#### PROGRAM SPECIAL FEATURES

- It is been accredited as a National Brand Program and a Guangdong Province Brand Program;
- It has access to in-University Practicum Teaching Centers, including;
- SCUT-Tencent Guangdong Engineering Practicum Teaching Center;
- SCUT-Microsoft Guangdong Engineering Practicum Teaching Center;
- SCUT-Samsung Guangdong Engineering Practicum Teaching Center;
- It offers entrepreneurship courses in IT Business.



## CAREER PROSPECTS

- ① Graduates will possess the capabilities needed to work in industrial organizations, research departments, and computer hardware/software development organizations, and governmental departments. They will also be equipped to contribute in the areas of computing research, engineering development, and other related fields.
- ② Employment Rate: 100%

## INTERNATIONAL ECONOMICS AND TRADE

### PROGRAM OVERVIEW

International students undertaking this program will:

- Develop a systematic command of basic theories and tools of economics and management science;
- Understand the basic rules and operations of international trade, including the principles of international trade bodies such as the WTO;
- Understand computer applications for trade analysis and management;
- Acquire, through theory and practice, cross-cultural literacy and, improved proficiency in English, and enhanced Chinese language skills.

### PROGRAM SPECIAL FEATURES

It has its own International Business Laboratory and an emphasis on an integration of Chinese and western economics theory and practice.

### MAIN COURSES

The core courses are: Microeconomics, Macroeconomics, Principles of Transnational Corporations Management, International Finance, Financial Management, Principles of Accounting, International Marketing, International Trade, Business Negotiation, Chinese Language, Chinese Culture.

### CAREER PROSPECTS

Graduates are in high demand in fields of international business and economics, multinational enterprises, and governmental departments of economics, foreign trade companies, export-oriented enterprises, and securities traders.

## BUSINESS ADMINISTRATION (BILINGUAL)

### PROGRAM OVERVIEW

International students undertaking this program will:

- Cultivates students with comprehensive development in morality, intelligence, and physique to meet the needs of social and economic development;
- Demonstrates subject matter knowledge of economics and management;
- Master theories and skills of business administration;
- Being senior specialized managers with a high level of foreign language and computer application ability.

## PROGRAM SPECIAL FEATURES

The Bachelor of Management in business administration program (BA, broad stream), rated as "Outstanding Undergraduate Program" by both national and provincial education authorities, gives students comprehensive knowledge to all basic aspects of business administration, equipping them with broad-based knowledge and expertise, broad horizon and whole-educated personality to become well-rounded business leaders as well as professional candidates who would further study for master's or PhD program.

### MAIN COURSES

Microeconomics, Macroeconomics, Management Principles, Accounting, Principles of Marketing, Organizational Behavior, Human Resource Management, Financial Management, Enterprise Strategic Management, Management Statistics, Operations research.

### CAREER PROSPECTS

After graduation, students will be engaged in professional management functions at large or medium-sized state-owned enterprises, foreign-invested enterprises, private enterprises, and government departments, as well as continuing to study for a postgraduate degree.

## ENVIRONMENTAL ENGINEERING (BILINGUAL)

### PROGRAM OVERVIEW

International students undertaking this program will:

- Receive a thorough grounding in theoretical engineering and the application of those broad principles to practical research-based projects and/or industry-based projects;
- Develop professional capabilities to participate in and contribute to engineering project teams;
- Have a broad appreciation of and be able to specialize in water treatment engineering, air pollution control engineering, solid waste disposal and recycling, and biological technology;
- Acquire, through theory and practice, cross-cultural literacy and, improved proficiency in English, and enhanced Chinese language skills.

### PROGRAM SPECIAL FEATURES

- It is accredited as a Guangdong Province Brand Program.
- It has its own Guangdong Provincial Environmental Engineering Experiment Teaching Demonstration Center.
- It offers entrepreneurship courses in Environmental Industry.

### MAIN COURSES

Fluid Mechanics and Heat Transfer, Environmental Toxicology, Air Pollution Control Engineering, Environmental Monitoring, Solid Waste Treatment and Disposal, Environmental Engineering Microbiology, Water Pollution Control Engineering, Environmental Entrepreneurship Education, Chinese language, Chinese Culture.

### CAREER PROSPECTS

- ① Graduates will be able to apply their knowledge to environmental management and protection globally. They will possess the capabilities needed to work in industrial and mining enterprises, academic research institutions environmental protection departments and other government sectors.
- ② Employment Rate: 100%





## ENVIRONMENTAL ENGINEERING (BILINGUAL)

### PROGRAM OVERVIEW

students undertaking this program will:

- Receive a thorough grounding in theoretical civil engineering and the application of those broad principles to practical research-based projects and/or industry-based projects;
- Develop a creative/solutions-based approach to key civil engineering challenges;
- Gain insights into the practical application of theory and creativity to major civil engineering projects in the pearl river delta;
- Consolidate their multicultural communication, teamwork, and management skills in the project team;
- Acquire, through theory and practice, cross-cultural literacy and, improved proficiency in English, and enhanced Chinese language skills.

### PROGRAM SPECIAL FEATURES

- The program is a national leader and has contributed to the economic development of south China, Hong Kong, Macau, and Southeast Asia.
- It is geared to the standards of the international civil engineering industry.
- It is accredited as a Guangdong Province Brand Program.
- It has its own Guangdong Provincial Civil Engineering Experiment Teaching Demonstration Center.
- It offers entrepreneurship courses in Civil Engineering Industry.

### MAIN COURSES

Theoretical Mechanics, Mechanics of Materials, Structural Mechanics, Fluid Mechanics, Soil Mechanics, Theory of Concrete Structures, Theory of Steel Structures, Materials for Civil Engineering, Surveying, Civil Engineering Construction, Construction Project Management, Chinese language, Chinese Culture.

### CAREER PROSPECTS

- ① Graduates will be equipped to contribute in the areas of civil engineering structure design, construction management, quality monitoring, technical consulting, and infrastructure project planning.
- ② Employment Rate: 98.1%

## MATERIALS SCIENCE (BILINGUAL)

### PROGRAM OVERVIEW

International students undertaking this program will:

- Be provided with a consolidating foundation in natural science, materials science, and engineering;
- Develop a sound grasp of the technologies of materials and devices design, manufacturing, and testing, both in traditional industries and innovative high-tech industries;
- Master the theory and technical skills in the application of materials, and establish a solid foundation for further study and higher degrees;
- Advance their professional practices attitudes and skills, underpinned by a deep knowledge of related scientific theories, an innovative perspective and competence, a capacity for independent research and problem-solving, and consolidate an international competitive advantage based on enterprising spirit, and global vision;
- Acquire, through theory and practice, cross-cultural literacy and, improved proficiency in English, and enhanced Chinese language skills.

### PROGRAM SPECIAL FEATURES

- ① It is a well-designed teaching and training system that combines experience from world class universities and the excellence of education based on Chinese Characteristics.
- ② It provides a deep and high-quality focus on innovation in material science that is based on the essential theories of relationship between micro structure and performance of materials.

### MAIN COURSES

Analytic Chemistry, Inorganic Chemistry, Organic Chemistry, Physical Chemistry, Structural Chemistry, Solid Physics, Thermodynamics and Statistical Physics, Materials Mechanics, Fundamentals of Materials Science, Physical Properties of Materials, Modern Methods for Materials Characterization and Analysis, Materials Calculation and Simulation, Materials Selection and Design, Fundamentals of Materials Processing.

### CAREER PROSPECTS

- ① Graduates will possess the capabilities needed to work both in traditional industries and innovative high-tech industries. They will also be equipped to establish a solid foundation for further study and higher degrees.
- ② Employment Rate: 100%





# MASTER PROGRAMS

## INFORMATION AND COMMUNICATION ENGINEERING (2 YEARS)

### OBJECTIVES

This program aims at providing graduates of electronic and information engineering, electrical engineering, telecommunications engineering, computer science and other related disciplines an opportunity for further study at postgraduate level. Students will embark on a broad choice of core subjects in multimedia technologies, telecommunications and electronic engineering that enable them to meet new challenges and tap new opportunities in relevant fields. Students can also acquire the latest technical know-how by registering for specialized subjects in a chosen area that focuses on the cutting-edge issues facing the engineering profession today. Students who have managerial responsibilities can take electives on business or management according to their interest and career needs.

### PROGRAM SPECIALITY

- ① Key Discipline in SCUT;
- ② Group projects supported by a professional laboratory;
- ③ Industrial experience and exchange programs;
- ④ Distinguished alumni, such as TCL President Li Dongsheng.

### CURRICULUM

	Course Title	Course Credit	Hours
Compulsory Courses	Signal and System	3.0	48
	Chinese Culture	2.0	32
	Basic Chinese	4.0	64
	Intercultural Communication	2.0	32
	Principles of Modern Communications	3.0	48
	Digital Signal Processing	3.0	48
	Embedded System Design	2.0	32
	Multi-antenna Signal Processing and MIMO Communications	2.0	32
	Information Hiding and Digital Investigation	2.0	32
	Computer Vision and Application	2.0	32
	Machine Learning for Speech Processing	2.0	32
	Machine Learning	2.0	32
	Wearable Systems	2.0	32

## ELECTRICAL AND COMPUTER ENGINEERING (2 YEARS)

### OBJECTIVES

The objective of this program is to equip graduates, who seek a career in the Electrical and Computer Engineering (ECE), with in-depth knowledge in signal processing and control techniques for the design and development of electrical and computer control systems, both from software and hardware aspects. Students who pass all examinations and dissertation will be awarded Master Degree in Engineering from South China University of Technology.

### PROGRAM SPECIALITY

- ① The first two-year English-medium master program in SCUT;
- ② Brand major for international students;
- ③ First-class research environment;
- ④ Joint training programs with multinational enterprises.

### CURRICULUM

	Course Title	Course Credit	Hours
Compulsory Courses	Basic Chinese	4	64
	Chinese Culture	2	32
	Intercultural Communication	2	32
	Signal and Systems	3	48
	Instrumentation and Sensors	3	48
	Digital Signal Processing	3	48
	Embedded System Design	2	32
	Computer Control and Application	2	32
	Robotics and Automation	2	32
	Machine Vision and Intelligent Systems	2	32
Elective Courses	Practice in Embedded programming	1	16
	Practice in Machine Vision and Intelligent Systems	1	16
	Feedback Control System Design	1	16
	Practice in Digital System (Advanced Signal Processing)	1	16



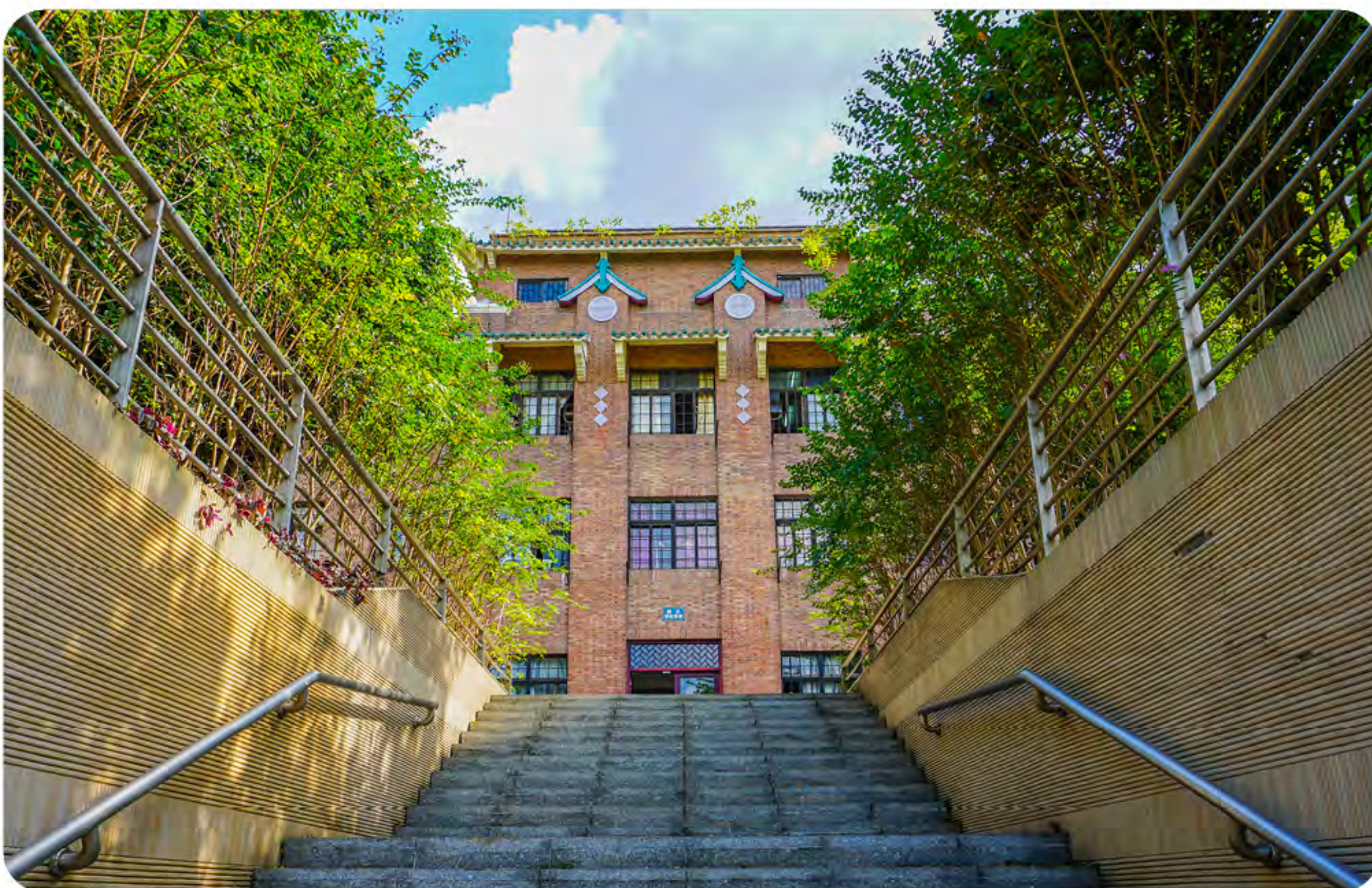
## FOOD SCIENCE AND ENGINEERING (2 YEARS)

### OBJECTIVES

The program aims to cultivate quality specialists who are well-developed morally, intellectually, and physically. Students are required to have good characters and fine scholarship, rigorous learning spirits, and team spirit; be equipped with solid theoretical foundation, specialized knowledge, and experimental skills in Food Science; be well informed with the technological developing trends of this discipline; have strong abilities to undertake independent scientific research, design, and teaching assignment. Graduates are expected to be competent to engage in teaching, scientific research, manufacturing, and management jobs in the field of Food Science.

### PROGRAM SPECIALITY

- Food Biotechnology;
- Food Biochemistry;
- Food Processing and Preservation;
- Food Engineering;
- Protein Chemistry and Nutrition;
- Lipid Chemistry and Engineering;
- Functional Carbohydrate;
- Marine Food Engineering;
- Food Safety and Control.



## CURRICULUM

	Course Title	Course Credit	Hours
Basic Courses	Chinese Culture	2	32
	Basic Chinese	2	32
	Intercultural Communication	2	32
Compulsory Courses	Food Process Engineering	2	32
	Food Micro & Macro components	2	32
	Advanced Food Microbiology	2	32
	Food Innovation	2	32
	Research Methodology and Statistics	2	32
Elective Courses	Advanced Food Packaging	2	32
	Current Technology in Food Processing	2	32
	Confectionery Science and Technology	2	32
	Advances in Food Dehydration	2	32
	Modeling in food processing	2	32
	Physical Properties of Foods	2	32
	Chemistry and Technology of Food Lipid	3	48
	Chemistry and Technology of Food Carbohydrate	3	48
	Traditional Food Habits in Asia	2	32
	Advanced Sensory Evaluation	3	48





## MBA (2 YEARS)

### OBJECTIVES

The program will empower students to reach their full potential, develop their competence in enterprise management and adaptation to the market. The program fosters high level, practical and versatile management talents with international vision, extensive knowledge, entrepreneurial mindset and good communication skills who meet the needs of socialist market economy development and are well-received by industrial, commercial enterprises and departments of economic management.

### PROGRAM SPECIALITY

- ① In 2012 and 2015, the MBA Program of SCUT passed the certification of AMBA.
- ② In 2016, the Program was awarded China MBA Top 50.
- ③ In 2018, the Program was evaluated as A-class in the first China University Professional-degree Rankings (CUPR), ranking the top 7% - 15% in China.
- ④ In 2019, the School of Business Administration of SCUT won the international certification of AACSB.

### CURRICULUM

	Course Title	Course Credit	Hours
Basic Courses	Managerial Economics	2.5	40
	Chinese Culture	2	32
	Theory and Practice of Chinese Socialism	2	36
	Dialectics of Nature	1	18
Core Courses	Financial Accounting	2	32
	Financial Management	2	32
	Organizational Behavior	2	32
	Data, Models and Decision-Making	2	32
	Marketing Management	2	32
	Managerial Communication	2	32
	Human Resource Management	2	32
	Enterprise Strategic Management	2.5	40
	Operations Management	3	48
	Business Ethics	2	32
	Commercial Rules	2	32
	International Business Management	2	32

	Course Title	Course Credit	Hours
Elective Courses	Business Simulation	2	32
	Logistics and Supply Chain Management	2	32
	Cross-Cultural Communication and Management	1	16
	Capital Markets and Listing Plan	2	32
	Management Accounting	2	32
	Analysis of Corporate Financial	2	32
	Project Management	2	32
	Business Model Design and Innovation	1	16
	Innovation Management	1	16
	Corporate On-site Consultation and Diagnosis	2	32

The above course schedule is for reference only, the specific courses are subject to the year of 2021 training scheme.

## SOFTWARE ENGINEERING (2 YEARS)

### OBJECTIVES

This program is designed to help students build a solid foundation of software engineering. Students can grasp professional knowledge about software engineering, including theory and method of software engineering, software engineering technology, software service engineering and domain software engineering. Students can develop abilities to engage in software engineering industry and undertake technical work independently. This program aims to cultivate top talents who are competent for teaching and studying software engineering theories and for developing software systems and other related works.

### MAIN RESEARCH FIELDS

- ① Theory and Method of Software Engineering
- ② Software Engineering Technology
- ③ Software Service Engineering
- ④ Domain Software Engineering





## CURRICULUM

	Course Title	Course Credit	Hours
Basic Courses	Chinese Culture	2	32
	Elementary Chinese	4	64
	Dissertation and Academic Standards	2	32
	Intercultural Communication	2	32
Compulsory Courses	Deep Learning	2	32
	Internet of Things Systems and Applications	2	32
	Artificial Intelligence	3	48
	Information Search Techniques	2	32
Elective Courses	Large Data Processing	2	32
	Parallel and Distributed Computing	2	32
	Introduction of Computer and Software Engineering	2	32
	Data Mining and Data Warehouse	2	32
	Software Testing Technology	2	32
	Computer Networks	3	64
	Machine Learning	2	32

## PhD PROGRAMS

### INFORMATION AND COMMUNICATION ENGINEERING (4 YEARS)

#### OBJECTIVES

The processing of data and signals digitally together with the communication of such information over fixed and wireless links is of major importance in many aspects of modern engineering. This course will provide you with a good understanding of digital signal processing, radio systems and digital communications together with topics covering real time implementation of the signal processing techniques. The theoretical aspects of the course will be reinforced with extensive and hands-on exercises.

#### MAIN RESEARCH FIELDS

- ① Theory of Communication and Network Technology;
- ② Ultrasonic Detecting and Imaging;
- ③ Image Processing and Video Processing;
- ④ Theory and Technology of Signal and Information Processing.

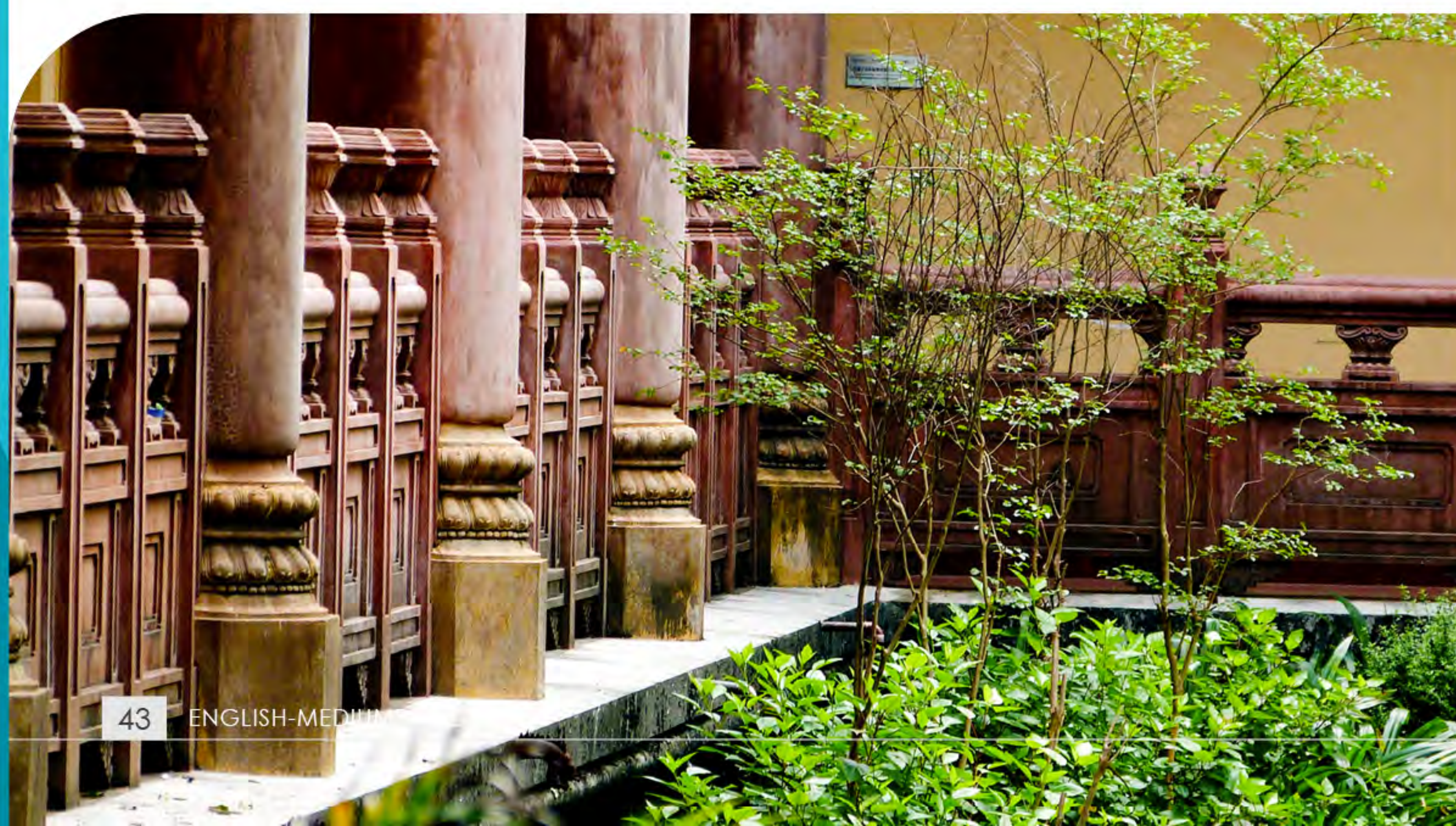
### CONTROL SCIENCE AND CONTROL ENGINEERING (4 YEARS)

#### OBJECTIVES

This program is intended to train senior specialists who possess solid and extensive theoretical basis and systemic expertise on the major, and have in-depth knowledge about the development direction and the international research forefront of this subject, who are proficient in a foreign language, who master the advanced methods of scientific research, and could carry on creative research and practical work.

#### MAIN RESEARCH FIELDS

- ① Control system analysis and synthesis;
- ② Analysis and synthesis of delay and uncertainty control system;
- ③ Networked control system theory and applications;
- ④ Intelligent control theory and applications;
- ⑤ Analysis and design of hybrid systems;
- ⑥ Nonlinear control system;
- ⑦ Control and optimization of switching system.





## MATERIAL SCIENCE AND ENGINEERING (4 YEARS)

### OBJECTIVES

This program aims to cultivate high-level specialized personnel who have solid and broad theoretical basis and systematic, in-depth professional knowledge of materials processing; who are well-informed with the developing trends of material science and engineering and have a command of necessary experimental and computer skills; who have the abilities of conducting scientific researches or solve complex engineering problems independently; who are proficient in a foreign language and computer application skills; who are able to make creative achievements in the field of materials processing engineering. Students are expected to become perfect personnel in related research institutions, institutions of higher learning or production departments with good moral character and humane accomplishment.

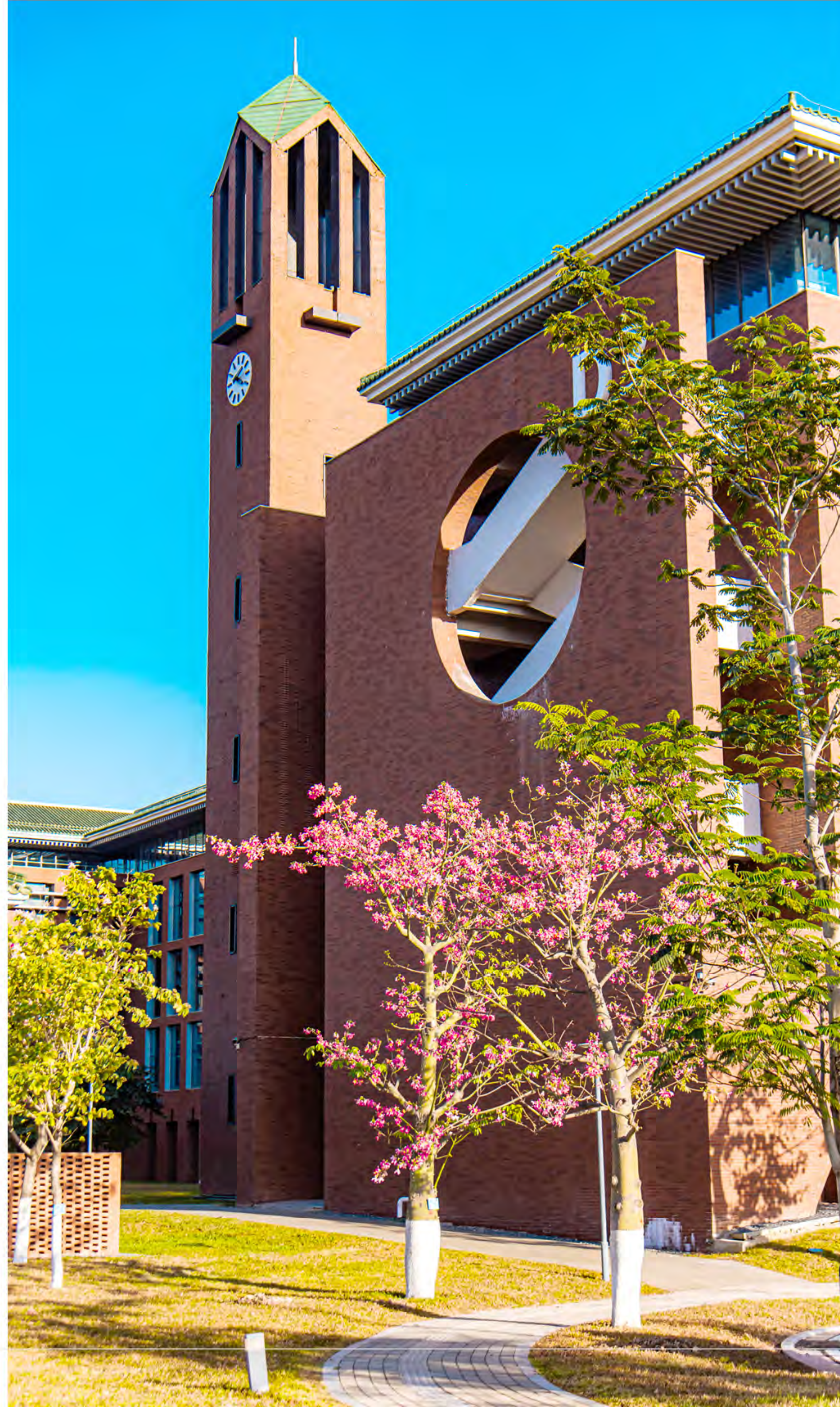
### MAIN RESEARCH FIELDS

- ① Material Physics and Chemistry;
- ② Photoelectric Materials;
- ③ Polymer Materials and Processing Engineering;
- ④ Inorganic Non-metallic Materials;
- ⑤ Metal Materials and Processing Engineering.

## FOOD SCIENCE AND ENGINEERING (4 YEARS)

### OBJECTIVES

The program aims to cultivate high-level specialized personnel who are strong in the ideals of patriotism, observance of the law, and discipline; who exhibit moral, intellectual and physical characteristics; who are noble, have a rigorous style of study, strong dedication to career, and a healthy spirit of teamwork. Students are required to demonstrate a solid yet broad understanding of basic theories, combined with a systematically thorough academic awareness. The abilities necessary to independently undertake scientific research and make creative achievements in scientific and specialized technical fields will be demonstrable.



### MAIN RESEARCH FIELDS

- ① Food Biotechnology;
- ② Food Engineering;
- ③ Marine Food Engineering;
- ④ Protein Chemistry and Nutrition;
- ⑤ Functional Carbohydrates;
- ⑥ Food Safety and Control.

## ENVIRONMENTAL SCIENCE AND ENGINEERING (BILINGUAL, 4 YEARS)

### OBJECTIVES

This program helps students to build solid theoretical foundation, develop systematic specialized knowledge and technical skills. Students can be able to learn the studies and techniques of environmental science and engineering. This program aims to cultivate top talents who have innovative and global visions and have the abilities to engage in scientific, teaching and management works in this field.

### MAIN RESEARCH FIELDS

- ① Water Environmental Science and Technology;
- ② Atmospheric Environmental Science and Pollution Control;
- ③ Solid Waste Treatment and Recycling;
- ④ Polluted Ecosystem Restoration Theory and Technology;
- ⑤ Water Pollution Control Theory and Technology;
- ⑥ The Ecological Environment.

**Note:**

The above information is subject to changes with further notices.



# NON-DEGREE PROGRAMS

## INTERNATIONAL FOUNDATION PROGRAM (Chinese or English Medium) (1 Year)

### PROGRAM OVERVIEW

The International Foundation Program offered by South China University of Technology is designed to prepare international students to operate in a university setting by familiarizing them with the requirements needed to succeed as an undergraduate student. The program is suited for those who do not meet the minimum requirements for direct entry into SCUT's undergraduate programs.

All courses are conducted in Chinese or English by SCUT lecturers and by experienced instructors. Students are accepted to undergraduate degree programs at SCUT if they successfully complete the program. Upon successful completion of the program, a certificate recognized by other higher education institutions will be awarded.

### TUITION

- Chinese-Medium: RMB 23,000 per academic year;
- English-Medium: RMB 18,000 per academic year.

### MAIN COURSES

- Chinese-Medium: Mathematics, Physics, Comprehensive Chinese, IT Chinese, Specialty Chinese.
- English-Medium: Mathematics, Physics, English, Basic Chinese, Management, Introduction to Computer Science.

### ADMISSION REQUIREMENTS

- ① 5 IGCSE/O-levels grade A-D or 9-4 (new grading system) in relevant subjects, excluding native language/GED/Vocational Colleague graduate Certificate and results, or a letter from your current school which shows that you have successfully completed two years of high school.
- ② English test results: Applicants from non-English speaking countries are required to submit a TOEFL score of 50 or IELTS 5.0, excluding IGCSE/O-levels/GED.
- ③ Spring semester intake in Chinese-medium foundation program: HSK Band 4 with 180 scores or above.

## GENERAL CHINESE PROGRAM

	Expected Result	Main Courses	Optional Courses
Basic	Students are expected to know basic phonetic and tones, and use about 3,000 words and 1,600 Chinese characters. At the end of the course, students should have a basic command in listening, speaking, reading, and writing which meets the needs of daily living and study.	Basic Chinese, Basic Listening, Speaking, and Reading, other optional courses	
Intermediate	Students will be able to use about 5,200 words and about 2,200 Chinese characters. At the end of the course students should have a good command in listening, speaking, reading, and writing, and can deal with undergraduate courses.	Intermediate Listening, Speaking, Reading, Basic Writing in Chinese, Business Chinese, Newspaper Reading, online News Reading;	<ul style="list-style-type: none"> <li>• Chinese Characters</li> <li>• Cantonese</li> <li>• Scientific Chinese</li> <li>• Chinese Culture</li> <li>• Kong Fu</li> <li>• Calligraphy</li> <li>• HSK Preparation</li> </ul>
Advanced	Students will be able to use about 7,000 words and 4,000 Chinese characters. Students should be able to listen to Chinese radio programs, read Chinese newspapers, and deal with postgraduate study in Chinese. The language skills will enable students to be fully involved in social and work activities such as tourism and business.	Advanced Chinese, Advanced Listening, Speaking, Reading, Applied Chinese Writing, Grammar of Modern Chinese, Chinese Culture, Cantonese, Business Chinese, Modern Chinese Lexicon, Chinese Rhetoric, Literature Conspectus, Chinese movies, other optional courses	



## TUITION

One semester: RMB 8,500 One year: RMB 16,200.

## APPLICATION DEADLINE

Fall Semester: 30 June;

Spring Semester: 31 December.

## ACTIVITIES

Inner city tours to historical sites.

## DURATION

- Long-Term: 1 semester or 1 academic year (Each academic year has two semesters);
- Short-Term: 1-2 months (Applicants can choose an appropriate course level according to their Chinese language proficiency).

# INTENSIVE CHINESE PROGRAM

## PROGRAM OVERVIEW

The Intensive Chinese Language Program is designed for the international students who need to improve their Chinese language proficiency in a short period of time. The program focuses on improving students' comprehensive Chinese knowledge and skills, including listening, speaking, reading, and writing. With the completion of this one-year program, students should have a good command of using Chinese language to conduct deeper communication and discussion, as well as achieving a greater proficiency of Chinese language than that of others to successfully engage in major studies.

## ELIGIBILITY

- The Intensive Chinese Program is only applicable to the beginner; For those who have basic Chinese, please apply for General Chinese Program.
- All applicants without HSK result who apply for degree program are required to attend this program prior to their degree studies.



## PROGRAM DURATION AND SEMESTERS

The Intensive Chinese Language Programs a one-year program, consists of two semesters. The Fall semester starts from early September while the Spring semester starts from the end of February. The exact dates subject to the admission notice.

## MAIN COURSES AND CURRICULUM

30 Teaching Hours per Week.

### Compulsory:

Basic Comprehensive Chinese (Listening, Reading & Writing, Speaking; Improved Comprehensive Chinese (Listening, Conversation, etc.); Academic Chinese; HSK Preparation.

### Optional:

Basic/Intermediate Scientific Chinese; Basic/Intermediate IT Chinese; Chinese Movie Appreciation; Chinese Songs; Chinese Kong Fu or Calligraphy, etc.

## COURSE HIGHLIGHTS

- ① Courses are intensive;
- ② Teaching speed is going fast;
- ③ Proficiency of language is improving fast.

## APPLICATION DEADLINE

Fall Semester: 30 June Spring Semester: 31 December.

## TUITION

RMB 18,200 per year, RMB 10,000 per semester.



# INTERNATIONAL SUMMER CAMP PROGRAM WITH CREDITS

## PROGRAM OVERVIEW

SCUT has been organizing summer camp program in Chinese language and culture for over ten years. The summer camp program has been developed specifically with international students who are interested in learning or increasing their knowledge of Chinese language, culture, and history. Through a series of class teaching and activities, participants will be able to conduct usual communication by using Chinese or English language and gain with a greater understanding of China, its people and history. SCUT has provided the training classes for over thousand international students from all over the world.



## COURSES

### ① Courses I: Chinese Language and Culture (2 Credits)

Courses on basic and intermediate levels

- Chinese courses are mainly comprised of Chinese Comprehension, Conversation, and Reading (12 hours per week);
- Culture courses and activities include: Contemporary Chinese Economy, Chinese Culture, Chinese History and Geography, Chinese Calligraphy, Taiji and Chinese Kong-fu, etc. (4 hours per week);
- 3-4 visits to the local companies and inner-city tour.

### ② Courses II: Innovation: China's Great Bay Area (2 Credits)

- 8 lectures in English or Chinese medium;
- 8 hours per week Chinese language and culture exploration;
- 3-4 visits to the local companies and inner-city tour;
- The topics mainly include: Introduction of the latest development information and achievements of Guangdong, Hongkong, Macao & Great Bay District, Economy, Politics, E-commerce, Artificial Intelligence, Face Recognition System, Smart City, Modern Transportation, New Materials Application, etc.

## COURSE HIGHLIGHTS

- ① Invite well-known scholars and professors to introduce the latest development achievement of the related major and field and learn about the latest technology and economic development trends.
- ② Comprehensively and deeply understand the development process of contemporary China, and feel the vitality and speed of Guangdong economic and technological development.
  - The actual lectures delivered are subject to change
  - Group applications are welcome; Programs can be tailored to the specific students' interests.

## APPLICATION MATERIALS

The applicants must first apply on the website: [www.scut.edu.cn/apply](http://www.scut.edu.cn/apply), fill the application form and upload the scan copy of your passport (photo page).

## SCHEDULE

The International Summer Camp Program will last for 4 weeks, starting from July to Aug 2023.

## APPLICATION DEADLINE

30th June.

\*Exact dates are subject to Admission Notice.

## FEES

Tuition: RMB 3,500

## COMPLETION

Upon completion of the program, the participants will be awarded a certificate.

# SCHOLARSHIP

## CHINESE GOVERNMENT SCHOLARSHIP FOR POSTGRADUATE STUDENTS

In order to increase the cooperation and understanding between the people of China and other countries, develop outstanding international talent, SCUT will provide about 70 scholarships for full-time postgraduate students under the Chinese government scholarship program.

### ELIGIBILITY

- ① Applicant must be non-Chinese national and be in good health.
- ② Education background and age limit:
  - Applicants studying to earn a Master's degree must have a Bachelor's degree and be under the age of 35.
  - Applicants studying to earn a Doctorate degree must have a Master's degree and be under the age of 40.

Scholarship Program	Target Group	Supporting Categories	Coverage	Acceptance Agent	
Chinese government scholarship	Chinese University Scholarship	All Applicants	Degree-programs (Postgraduates)	Full	Admission Office of SIE, SCUT
	Silk Road Program	All Applicants	Degree-programs (Postgraduates)	Full	
	YES-CHINA MBA for Development Countries	Applicants of 65 Countries	Degree-programs (Master's candidates)	Full	Chinese Embassy of 65 Development Countries;
	Bilateral Program	All Applicants	Degree-programs and Long-term Advanced Study (Bachelor's, Master's and Doctoral candidates)	Full	Dispatching; Authorities or Chinese Diplomatic Missions
	EU or American Credit Program	Applicants from EU or American Universities Signed MOU with SCUT	Long-term Advanced Study (Bachelor's, Master's and Doctoral candidates)	Full	Admission Office of SIE, SCUT



## DETAILS OF THE SCHOLARSHIP (FULL SCHOLARSHIP)

- ① Full coverage on registration fee, tuition fee and accommodation fee.
- ② Monthly living allowance:
  - Master's degree students: RMB 3,000
  - Ph.D degree students: RMB 3,500
- ③ Comprehensive medical insurance for international students in China.

## IMPORTANT DATES

- ① Application Date: October each year to March each year
- ② Final awarded applicants will be announced in late July
- ③ The admission office will deliver admission letter and visa application form (JW201) to final awarded applicants in early August
- ④ Program Start Date: early September each year

## APPLICATION PROCEDURE

**Step 1:** Apply at SCUT online application portal: <https://www.scut.edu.cn/apply>.

All master's or doctoral applicants must contact supervisors from their major schools of SCUT via mail or interview first.

- The applicants, who pass the assessment by supervisors, please ask the supervisors to sign a pre-acceptance letter.
- Regarding how to contact the supervisor, please find the information at <https://sie.scut.edu.cn>

**Step 2:** Download and follow <The SCUT- Chinese Government Scholarship Application Checklist> to prepare your application materials. Applicants are required to print out this Checklist and deliver your paper documents along with the Checklist to the Admission Office of School of International Education, SCUT.

Download Address: <https://sie.scut.edu.cn/29045/list.htm>

The Delivery Address: Admissions Office, School of International Education, SCUT, Room 205, B1 Building, South China University of Technology, University Town Campus, Panyu District, Guangzhou. Postcode:510006. Tel: 86-20-39381048.

**Step 3:** Apply at CSC application portal: <http://www.csc.edu.cn/Laihua/> and submit the pre-admission letter from SCUT.

\*Agency No: 10561 Type Category: B



## APPLICATION MATERIALS

- ① <The SCUT- Chinese Government Scholarship Application Checklist>
- ② <APPLICATION FORM FOR CHINESE GOVERNMENT SCHOLARSHIP>
- ③ <SCUT APPLICATION FORM FOR FOREIGN STUDENTS>
- ④ Front page of passport (passport should be valid for at least 1 year from the date of application)
- ⑤ Visa page (applicants currently in China are required to provide)
- ⑥ Notarized highest diploma or certificate of expected graduation (photocopy and translation copy)
- ⑦ Notarized official transcripts (photocopy and translation copy)
- ⑧ A study or research plan in Chinese/English (1000 words minimum)
- ⑨ Two recommendation letters (doctoral applicants are required to provide 2 recommendation letters from professors or associate professors)
- ⑩ A pre-acceptance letter signed by SCUT professors or associate professors
- ⑪ Doctoral applicants are required to submit abstract(s) or graduation thesis(es) or published paper(s).
- ⑫ To apply for music related programs, please submit a DVD or CD of your live performance. To apply for architecture related programs or design related programs, please submit at least two sketches and two pieces of color paintings.
- ⑬ Original copy of Foreigner Physical Examination Form (written in Chinese/English, the form should be valid for at least 1 year from the date of application)
- ⑭ Valid language certificate

### Language requirements for Chinese Medium programs:

- HSK Band 4 with 180 scores or above for Science or Engineering studies
- HSK Band 5 with 180 scores or above for Liberal Arts, Economics, or Management studies

### Language requirements for English Medium programs (only for non-English speaking countries):

- TOEFL iBT/ MyBest® Scores 80 or above
- TOEFL Essentials 8 or above
- IELTS 6.0 or above
- Other equivalent English language qualifications

\* Applications from English speaking countries:

A certificate of English as medium of instruction issued by graduated universities.

## NOTES

\*All documents mentioned should be in either Chinese or English.

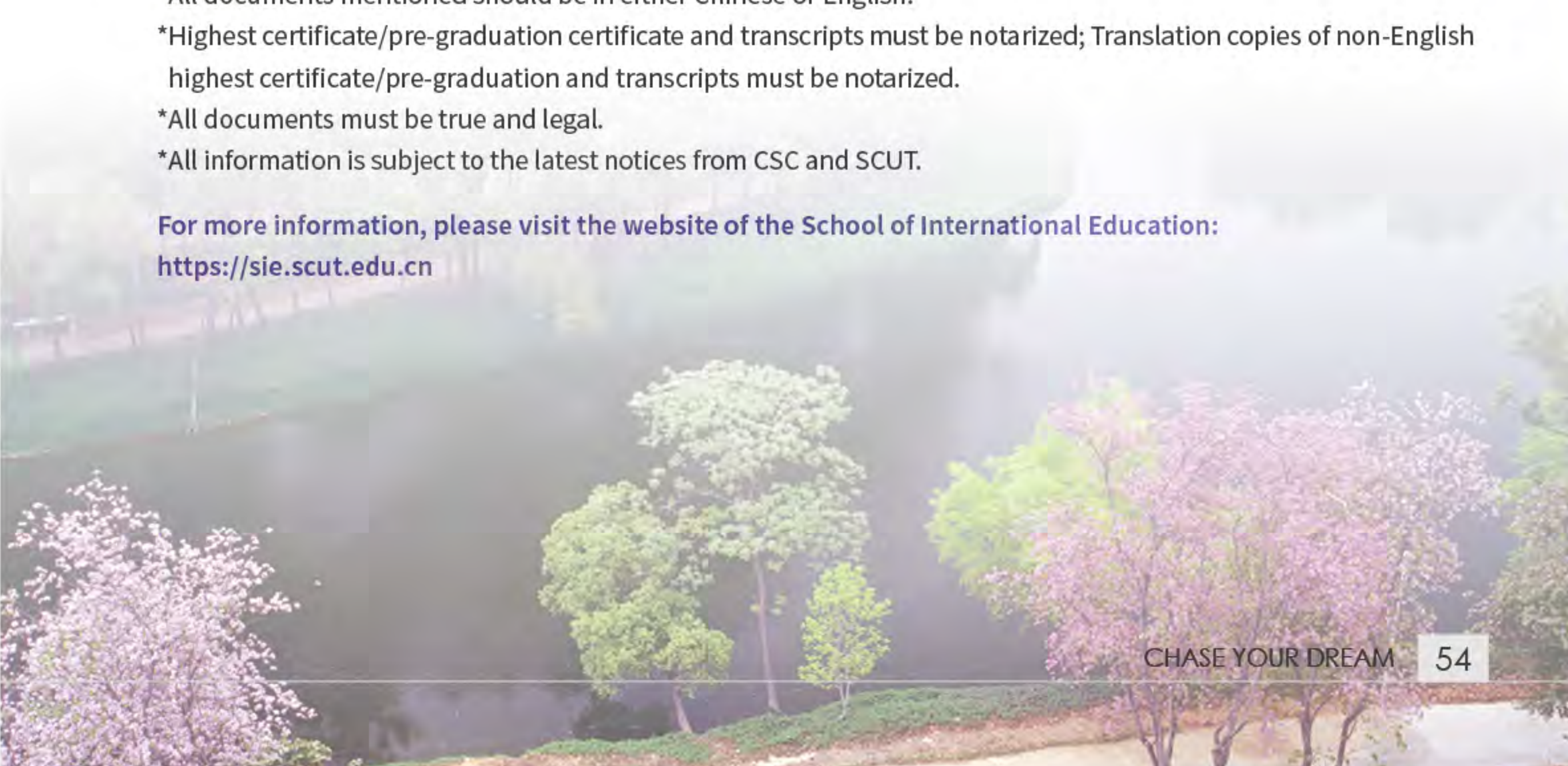
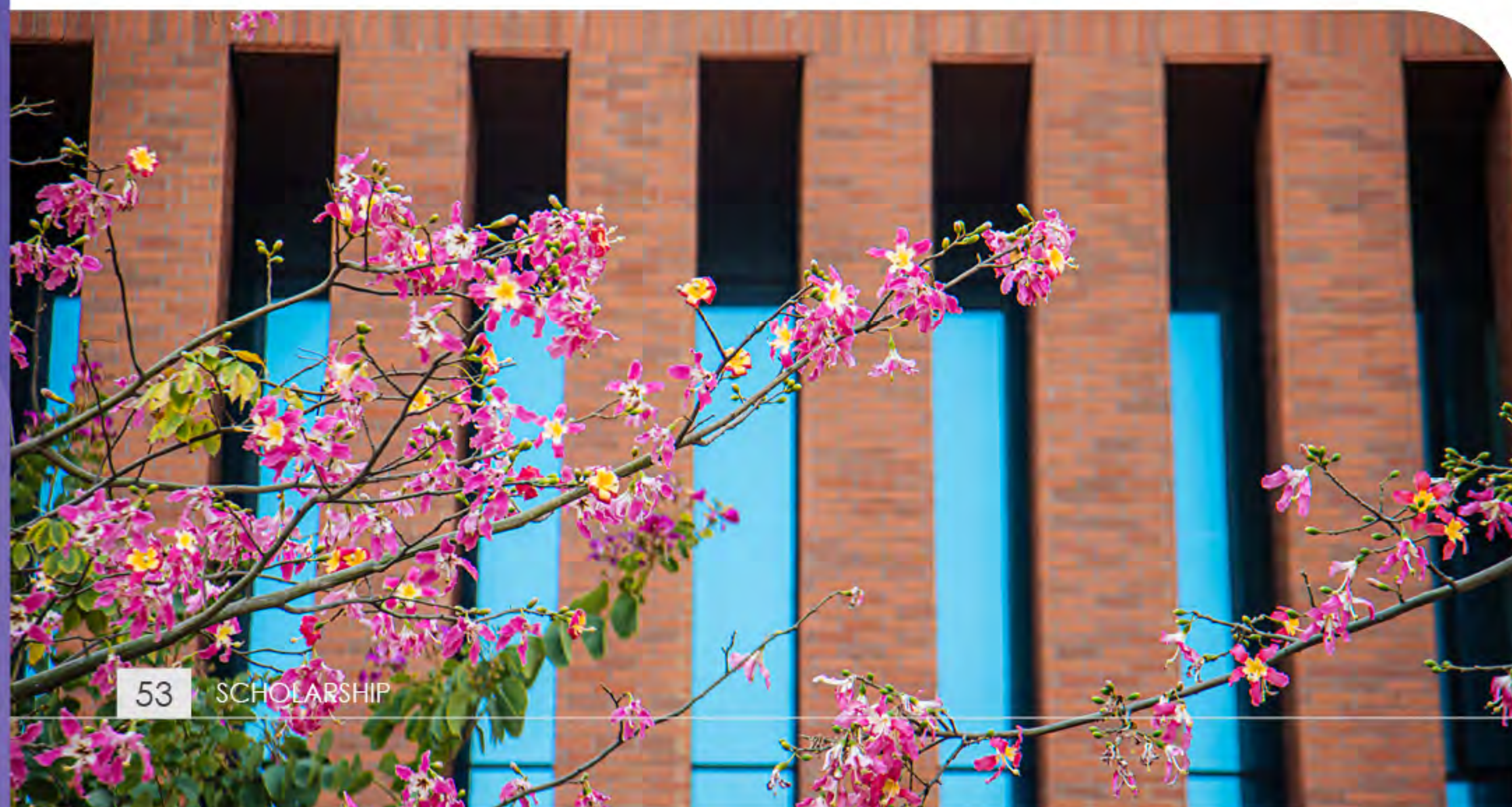
\*Highest certificate/pre-graduation certificate and transcripts must be notarized; Translation copies of non-English highest certificate/pre-graduation and transcripts must be notarized.

\*All documents must be true and legal.

\*All information is subject to the latest notices from CSC and SCUT.

For more information, please visit the website of the School of International Education:

<https://sie.scut.edu.cn>





# INTERNATIONAL CHINESE LANGUAGE TEACHERS SCHOLARSHIP

SCUT, appointed by Center for Language Education and Cooperation to host International Chinese Language Teachers Scholarship for Four-week program, One-semester Program, One-year Program and Bachelor's Degree in Teaching Chinese to Speakers of Other Language Program. With competitive course settings, diversified extra-curriculum activities and good teaching effect, SCUT has gained great appraisal by Center for Language Education and Cooperation and students who studied at SCUT.

## ELIGIBILITY

- ① Applicants must be non-Chinese citizens, in good Physical and mental condition, well performed both academically and behaviorally. Aspired to take future careers on the teaching or international promotion of Chinese language.
- ② Between the ages of 16-35 on September 1st, 2022. Applicants currently worked as Chinese language teachers shall not exceed the age limit of 45, while undergraduate students shall not exceed the age limit of 25.

## SCHOLARSHIP TYPES AND QUALIFICATIONS

- ① **Scholarship for Bachelor's Degree in Teaching Chinese to Speakers of Other Language**  
Commences September 2022 and provides scholarship for maximum four academic years. Applicants must have graduated with a high school diploma, and have a minimum score of 210 in HSK Test (Level 4) as well as 60 in HSKK test (Intermediate Level).
- ② **Scholarship for One Academic-Year Study**  
This category provides a scholarship for 11 months. Applicants must not be in china at the time of applying. Enrollment starts in September 2022. Applicants must have a minimum score of 210 in HSK Test (Level 3) and possess HSKK result
- ③ **Scholarship for One-Semester Study**  
Enrollment starts in September 2022 or March 2023. This category provides a scholarship for 5 months. Applicants who already have X1 or X2 visa will be refused. Applicants must have a minimum score of 180 in HSK Test (Level 3) and possess HSKK result.
- ④ **Scholarship for Four-week Study**  
Enrollment starts in July 2022 or December 2022. This category provides a scholarship for 4 weeks. Applicants who already have X1 or X2 visa will be refused. Applicants must possess HSK result, and must apply in group through Center for Language Education and Cooperation. A group can only have between 10-15 applicants.



## CONVERGE AND CRITERIA

- ① The International Chinese Language Teachers Scholarship provides full coverage on tuition fee, accommodation fee, living allowance (except four-week program students) and comprehensive medical insurance package.
- ② Living allowance is granted on monthly basis. The allowance criteria per person is: Bachelor Students, One-Academic-Year Students, One-Semester Students: RMB 2,500 per month.

## APPLICATION PROCEDURE

- ① For all applicants, please log on Center for Language Education and Cooperation website (<http://cis.chinese.cn>) to register. Complete the Scholarships Application Form online and upload the scanned copies of relevant supporting documents.  
Application materials:
  - A scanned copy of the passport data page
  - HSK, HSKK score reports of no longer than two years
  - Recommendation letter signed by the head of the recommending Institutions
  - The Foreigner Physical Examination Form should be filled in Chinese or English
  - Degree scholarship program applicants need to provide notarized certification of the highest education diploma (or certificate of expected graduation), and official transcripts
  - Applicant who is currently working in a Chinese language teaching-related field shall provide an employment certification and reference letters from the agency
  - Applicants under the age of 18 shall submit notarized documents of entrusted legal guardians in China
- ② Applicants must submit all other documents required by SCUT for application.
- ③ Recommending institutions reviews materials and recommends applicants who meet the criteria to our university.
- ④ Applicants log on SCUT International Student Service System ([www.scut.edu.cn/apply](http://www.scut.edu.cn/apply)) to register (free of application fee). Fill out the personal information and upload the scanned copies of relevant supporting documents.
- ⑤ SCUT reviews materials, organizes online interviews, and issue the pre-admission on merit.
- ⑥ Center for Language Education and Cooperation reviews materials and announces the winners.

# GUANGDONG PROVINCIAL GOVERNMENT OUTSTANDING INTERNATIONAL STUDENT SCHOLARSHIP

In an effort to encourage increasing numbers of outstanding international students to study in Guangdong, the Guangdong Government has established the Guangdong Provincial Government Outstanding International Student Scholarship to promote the development of Guangdong Higher Education Management of international students and to advance international influence to Guangdong Higher Education.



The scholarship is awarded to full time international students with excellent performance. SCUT will provide benefit to early scholarship applicants.

#### ELIGIBILITY

- ① Applicants must be non-Chinese nationals and be in good health;
- ② Education background and age limit:
  - Applicants studying to earn a Master's degree must have a Bachelor's degree and be under the age of 35;
  - Applicants studying to earn a Doctorate degree must have a Master's degree and be under the age of 40.

#### IMPORTANT DATES

- ① Application Deadline: 15 June;
- ② During May-July, the admission office will have three round scholarship examination, successful applicants will be shortlisted and informed;
- ③ Before August, the admission office will send the Admission Letter and Visa Application Form (JW202) to successful applicants;
- ④ Start of Classes: September 1 (To be confirmed).

#### STANDARD OF THE SCHOLARSHIP

PhD Student: RMB 30,000;  
 Master Student: RMB 20,000;  
 Undergraduate Student: RMB 10,000.

#### NOTES:

- \* All documents mentioned should be in either Chinese or English;
- \* Translations of certificate and transcripts must be notarized.

#### APPLICATION MATERIALS

Apply at: <http://www.scut.edu.cn/apply>,  
 Filing the application form and uploading the following documents:

- ① The front page of passport (passport should be valid for at least 1 year from the date of application), visa page (applicants currently in China are required to provide);
- ② Highest diploma or pre-graduation certificate (notarized photocopy);
- ③ Official transcripts (notarized photocopy);
- ④ A study or research plan in Chinese or in English (no less than 500 words);
- ⑤ Recommendation letter (Ph.D needs 2 recommendation letters from professors or associate professors, Master and undergraduate student needs 2 recommendation letters from their school or instructors);
- ⑥ One cassette recording for those applying to music programs. Art Portfolio is required for those applying to architecture, fine arts and design programs;
- ⑦ Foreigner Physical Examination Form.



# SCUT INTERNATIONAL SCHOLARSHIP FOR EXCELLENCE



South China University of Technology (SCUT) offers the International Scholarship for Excellence to outstanding students who will matriculate into degree programs as full-time students. Selected students will receive a full or partial exemption from tuition for the normal duration of the degree. The level of benefits depends upon the applicant's academic excellence in previous academic achievements.

Item	Award Grade	Benefit (refer to the normal study period)
Bachelor' degree	First class honor	A full exemption from tuition
	Second class honor	A half exemption from tuition
	Third class honor	A half exemption from tuition for two years
Master's degree	First class honor	A full exemption from tuition
	Second class honor	A half exemption from tuition
	Third class honor	A half exemption from tuition for two years
Doctorate degree	Full scholarship	A full exemption from tuition Living allowance: RMB 1,400 per month (not including the Chinese study period)
Note		① The exemption from tuition is refer to the normal study period, and it's not include the extension study. ② Ph.D Applicant, who has not yet passed the HSK test of required level, could apply for studying one-year Chinese program. The tuition of the Chinese study could be exempted.

#### EVALUATION FOR RETENTION

Scholarship holders should attend the annual evaluation organized in each May. Those who are in good standing and have fulfilled the annual evaluation requirement can maintain the scholarship for the next academic year. Those who fail to reach the above requirements will be transferred to the status of self-funding students, but can attend the next evaluation to apply for the scholarship in the next academic year.





# FEES FOR STUDYING AT SCUT

## ELIGIBILITY

- ① Applicants must be non-Chinese citizen and be in good health.
- ② Education background:
  - Applicants applying for a Bachelor's degree must have high school diploma.
  - Applicants applying for a Master's degree must have a Bachelor's degree.
  - Applicants applying for a Doctorate degree must have a Master's degree.

## IMPORTANT DATES

- ① Application Deadline: 15 June
- ② During May-July, the admission office will have three round scholarship examination, successful applicants will be shortlisted and informed.
- ③ Before August, the admission office will send the Admission Letter and Visa Application Form (JW202) to successful applicants.
- ④ Start of Classes: September

## APPLICATION MATERIALS

Apply at <http://www.scut.edu.cn/apply>, filling in the application form online and uploading the following documents:

- ① The front page of passport (passport should be valid for at least 1 year from the date of application), visa page (applicants currently in China are required to provide).
- ② Highest diploma (original copy and notarized photocopy).
- ③ Official transcripts (notarized photocopy).
- ④ A study or research plan (Chinese or English, no less than 500 words).
- ⑤ Two recommendation letters (Ph.D needs 2 recommendation letters from professors or associate professors).
- ⑥ An pre-acceptance letter of supervisor issued by SCUT professors or associate professors (for postgraduate students).
- ⑦ The applicants of PhD have to submit Abstract(s) of Graduation Thesis(es) or Published Paper(s).
- ⑧ One cassette record for those applying for music programs. 2 Art Portfolio is required for those applying to architecture, fine arts and design programs.
- ⑨ Foreigner Physical Examination Form.
- ⑩ Language Certificate.

### \*Language requirements for Chinese Medium Programs:

- HSK Band 4 with 180 scores or above for Science or Engineering studies;
- HSK Band 5 with 180 scores or above for Liberal Arts, Economics, or Management Studies.

### \*Language requirements for English Medium Programs (only for non-English speaking countries):

- TOEFL iBT/ MyBest® Scores 68 or above; TOEFL Essentials 7.5 or above; IELTS 5.5 or above (For undergraduate students).
- TOEFL iBT/ MyBest® Scores 80 or above; TOEFL Essentials 8 or above; IELTS 6.0 or above. (For postgraduate students).

### \*Applications from English speaking countries:

- A letter of English as medium of instruction issued by graduated universities or education institutes.

## NOTES:

- All documents mentioned should be in either Chinese or English.
- Translations of certificate and transcripts must be notarized.
- All documents must be true and legal.

## APPLICATION FEE: RMB 450 TUITION:

Items	Programs	Fees
Basic/ Intermediate/ Advanced Chinese Program	One Month (No less than 10 people)	RMB 2,560
	Two Months (No less than 10 people)	RMB 4,400
	One Semester (General Chinese)	RMB 8,500
	One Academic Year (General Chinese)	RMB 16,200
	One Semester (Intensive Chinese)	RMB 10,000
	One Academic Year (Intensive Chinese)	RMB 18,200
International Foundation Program	One Academic Year (Chinese Medium)	RMB 23,000
	One Academic Year (English Medium)	RMB 18,000
Undergraduate Program (One Academic Year)	Programs in Liberal Arts (Chinese Medium)	RMB 18,200
	Bachelor of Arts in Teaching Chinese to Speakers of Other Language	RMB 18,200
	Programs in Economics & Administration (Chinese Medium)	RMB 20,000
	Programs in Science & Technology, Foreign Languages, Sports (Chinese Medium)	RMB 23,000
	Programs in Arts & Design (Chinese Medium)	RMB 25,000
	Programs of English Medium & Bilingual Medium	RMB 26,000
Master Program (One Academic Year)	Programs in Liberal Arts (Chinese Medium)	RMB 23,000
	Programs in Economics & Administration (Chinese Medium)	RMB 25,000
	Programs in Science & Technology, Foreign Languages, Sports (Chinese Medium)	RMB 28,000
	Programs in Arts & Design (Chinese Medium)	RMB 28,000
	MBA (English Medium)	RMB 44,500
	Programs of Other English medium	RMB 32,000
PH.D Program (One Academic Year)	Programs in Liberal Arts	RMB 34,000
	Programs in Economics & Administration	RMB 34,000
	Programs in Science & Technology	RMB 40,000



The tuition of general visiting students (bachelor/master students) stays the same with the tuition of corresponding bachelor/master programs.

The tuition of advanced visiting students (Ph.D students) stays the same with the tuition of corresponding doctoral programs.

## ACCOMMODATION FEES

Items	Programs	Fees
Wushan Campus (Air-conditioned)	Accommodation Fee (From the beginning of Autumn semester to the end of Spring semester, 10 months in total)	Single: RMB 15,000 Double: RMB 9,800 Triple: RMB 8,000
	Accommodation Fee (Only for short-term students) (During the Winter/ Summer Vacation)	Single: RMB 50/day Double: RMB 33/day Triple: RMB 27/day
	Accommodation Fee (Less than one month)	Single: RMB 90/day Double: RMB 50/day
University Town Campus (Air-conditioned)	Accommodation Fee (From the beginning of Autumn semester to the end of Spring semester, 10 months in total)	Double Room: RMB 8,000 Four-bed Room: RMB 3,500
	Accommodation Fee (Only for short-term students) (During the Winter/ Summer Vacation)	Double Room: RMB 27/ day Four-bed Room: RMB 12/ day
International Campus (Air-conditioned)	Accommodation Fee (From the beginning of Autumn semester to the end of Spring semester, 10 months in total)	Single Room: RMB 2,0000 Double Room: RMB 1,0000
	Accommodation Fee (Only for short-term students) (During the Winter/ Summer Vacation)	Single Room: RMB 67/ day Double Room: RMB 33/ day

Rooms are equipped with the following facilities: bathrooms, internet access ports and air-conditioning. Public facilities and equipment: Studying room, Reading room, Activity room, Ping-pang room, kitchen room and laundry room.

### NOTES:

- ① The rule of accommodation reservation service is: First Come, First Served;
- ② Students may choose to live off campus. Note that international students have to register at the local police station within 24 hours of moving into off-campus housing;
- ③ Students should pay the dormitory fees by bank card;
- ④ The Admission Letter will become invalid if the applicant is holding the expired visa in China.

### LIVING EXPENSES

We estimate that a single student living in Guangzhou will need RMB 15,000-20,000 or living expenses annually in addition to the tuition and accommodation fees. This amount includes food, clothes, books and travels.

### INSURANCE

RMB 800/year

### FOREIGNER PHYSICAL EXAMINATION

RMB 482 (The fee of health examination is free if you are degree student)

### APPLICATION FOR RESIDENT PERMIT

RMB 800 (12 months above)  
RMB 400 (less than 12 months)

### CAMPUS CARD

RMB 30 (free for degree students)





# UNIVERSITY FACILITIES

## LIBRARY FEATURES

- One of the top national university libraries of science and technology;
- One of 13 National Foreign Teaching Material Centers for Chinese ministry of Education;
- Total area of 67, 169 square meters;
- Collection of 8, 700,000 volumes of literature;
- Collection of 4, 890,000 volumes of digital literature;
- Access to 164 key domestic and foreign network electronic databases;
- Digital sources of both campuses can be shared;
- Provide about 600 professional databases using "Dialog", an international searching system;
- Inter-access to six key Guangzhou Shipai district university libraries;
- Service center with information inquiry, digital, photography, typing and photocopy services;
- Wireless service readily available in each library.



## IT FACILITIES

SCUT provides a wide range of it facilities including:

- University computer network email and internet access;
- PC facilities and central servers;
- Online learning capability;
- Classroom presentation technology;
- IT training and practice;
- Digital technology loans;
- Media production;
- Video conference suites;
- Language lab to assist students with any level of linguistic skills;
- Computer room is in the international student dormitory.



## STUDENT CANTEENS

### Wushan Campus

There are two student dining halls with comfortable and modern environment, and they provide many kinds of food to meet the needs of diverse tastes; The campus is equipped with a Family Mart Supermarket, light food Hut and Fruit House, offering beverage, cooked food and fresh fruits. AI vending machines are distributed in dormitories, teaching buildings and stadiums.

### University Town Campus

The University Town Campus has two student canteens, one of which offers Muslim food. Food can be purchased at the on-campus supermarket.

### Guangzhou International Campus

There are two student dining halls, comfortable and modern environment, to meet the needs of diverse tastes; The campus is equipped with a Family Supermarket, light food Hut and Fruit House, offering beverage, cooked food and fresh fruits. AI vending machines are distributed in dormitories, teaching buildings and stadiums.



## SPORTS FACILITIES

### Wushan Campus

- 21** basketball courts
- 8** tennis courts
- 16** badminton courts, international standard
- 1** swimming pool
- 4** volleyball courts
- 2** gyms
- 1** ground track and field
- 50** ping-pong table
- 1** skating rink with an area of 800 square meter

### University Town Campus

- 21** basketball courts
- 4** tennis courts
- 14** badminton courts, international standard
- 2** swimming pools
- 5** volleyball courts
- 2** gyms
- 1** kickboxing training field
- 2** ground track and fields

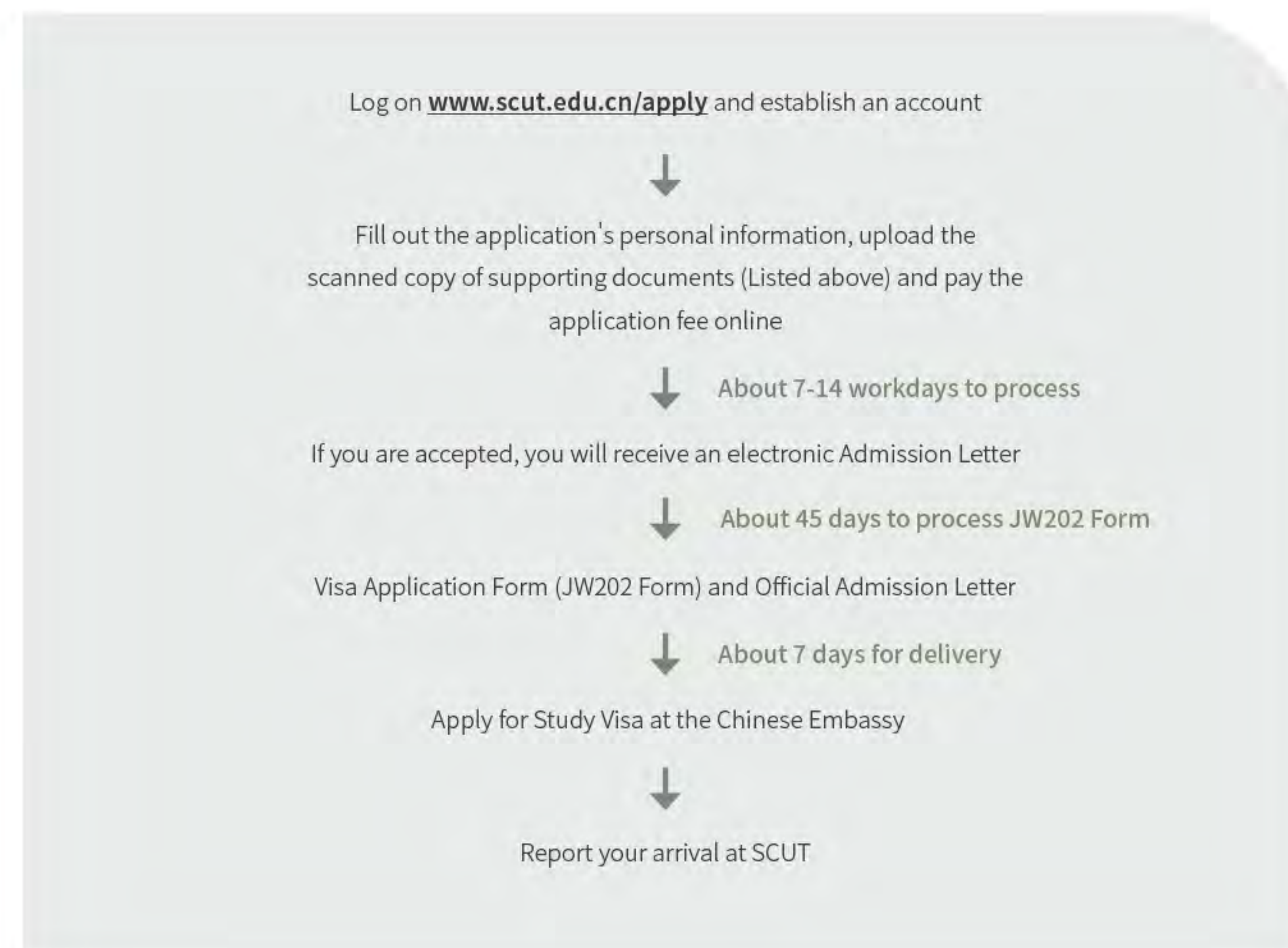


# APPLICATION PROCEDURE

## CHECKLIST



Passport Copy	Chinese Language	International Foundation	Undergraduate	Ordinary Studying	Master	Ph.D.	Advanced Studying
Passport Copy (Valid duration covers your study period at SCUT)	✓	✓	✓	✓	✓	✓	✓
HSK Certificate (For Chinese Medium Programs only)		✓	✓	✓	✓	✓	✓
English Test Result (TOEFL/IELTS or any other English Proficiency Certificate, For English Medium Programs only)		✓	✓	✓	✓	✓	✓
High School O'Level Certificate and Transcripts		✓					
High School Diploma and Transcripts			✓	✓			
Diploma and Transcripts of Previous Stage				✓			✓
Bachelor Diploma and Transcripts					✓		✓
Master Diploma and Transcripts						✓	✓
2 Recommendation Letters			✓		✓	✓	✓
Personal Statement/ Study Plan/ Research Proposal					✓	✓	✓
Pre-acceptance Letter					✓	✓	✓
Foreigner Physical Examination Form	✓	✓	✓	✓	✓	✓	✓
Portrait or Still life drawn by yourself (Only for architecture related majors)			✓	✓	✓	✓	✓



- ① Please upload the Required Documents in order to fulfill your application procedure. Each document has to be smaller than 1M.
- ② Certificates, diplomas and transcripts must be notarized copies by Chinese embassy or consulate. All of the documents should be translated into Chinese or English.
- ③ Two weeks after the semester starts, the application for changing majors will not be accepted.
- ④ If you have previously studied at any Chinese university, please upload the Visa page of your passport, prepare transfer letter which includes your attendance record (should be above 80%) and transcripts.
- ⑤ For applicants under the age of 18, guardians of Chinese nationality are required when applying for academic degree programs or long-term education programs. The Guardian Letter must be notarized and the specific requirements will be notified by email.
- ⑥ Some students need to submit the "Non-criminal Check" notarized by Chinese embassy and personal resume or submit financial certificates, and the specific requirements will be notified by email.