

TAV. 1

TRACCIA N°1
"SENIOR HOUSING"

DATI DI PROGETTO:

SUP. FONDARIA = ~ 7000 mq

SUP. A VERDE IN PIENA TERRA = 3415 mq = 48% S.F. > 40% RICHIESTO

S.L.P. MAX = 4500 mq

S.L.P. EDIFICATA

→ BLOCCO A = 1470mq residenza + 340mq servizi

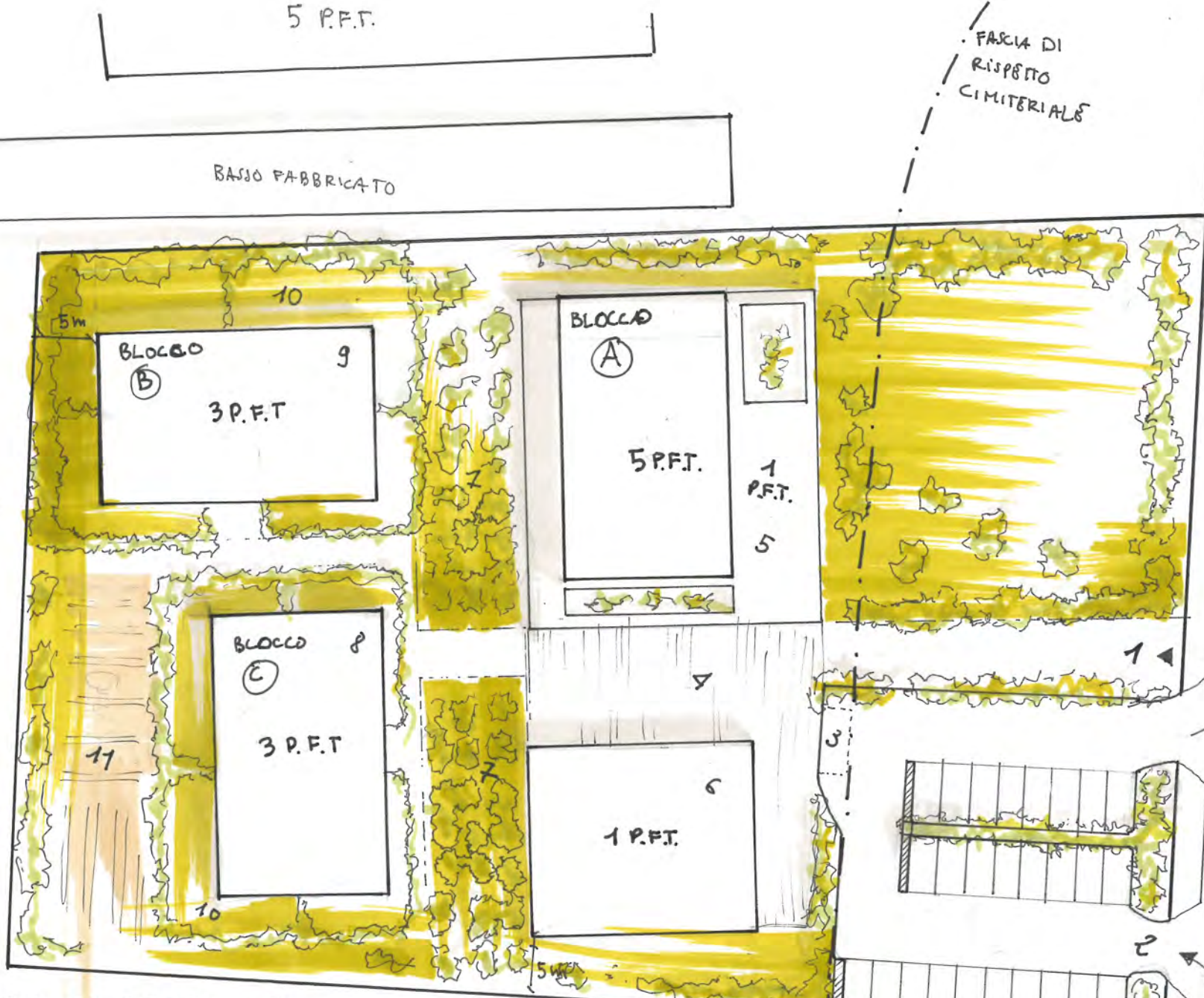
→ BLOCCO B = 1085 mq residenza

→ BLOCCO C = 1085 mq residenza

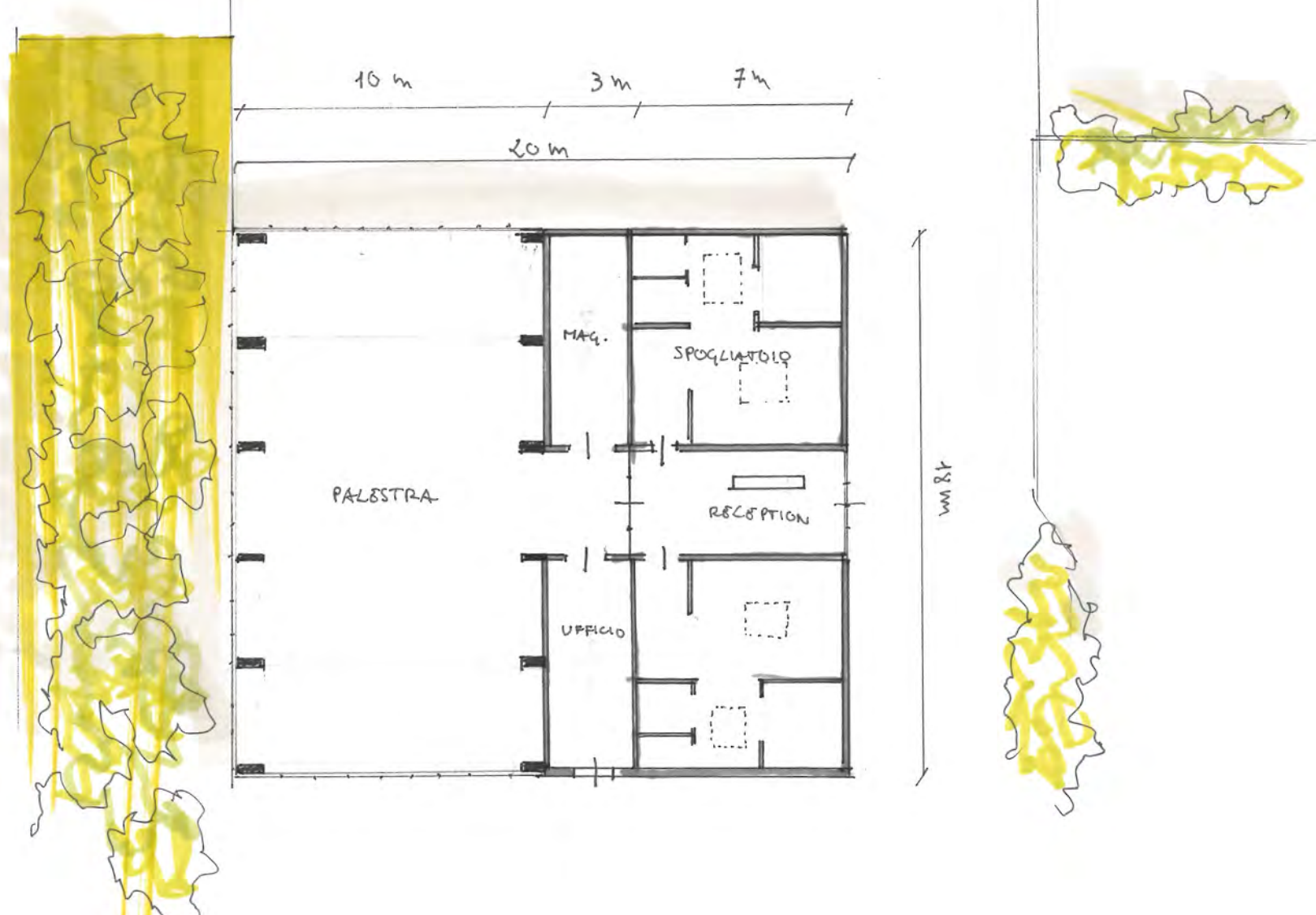
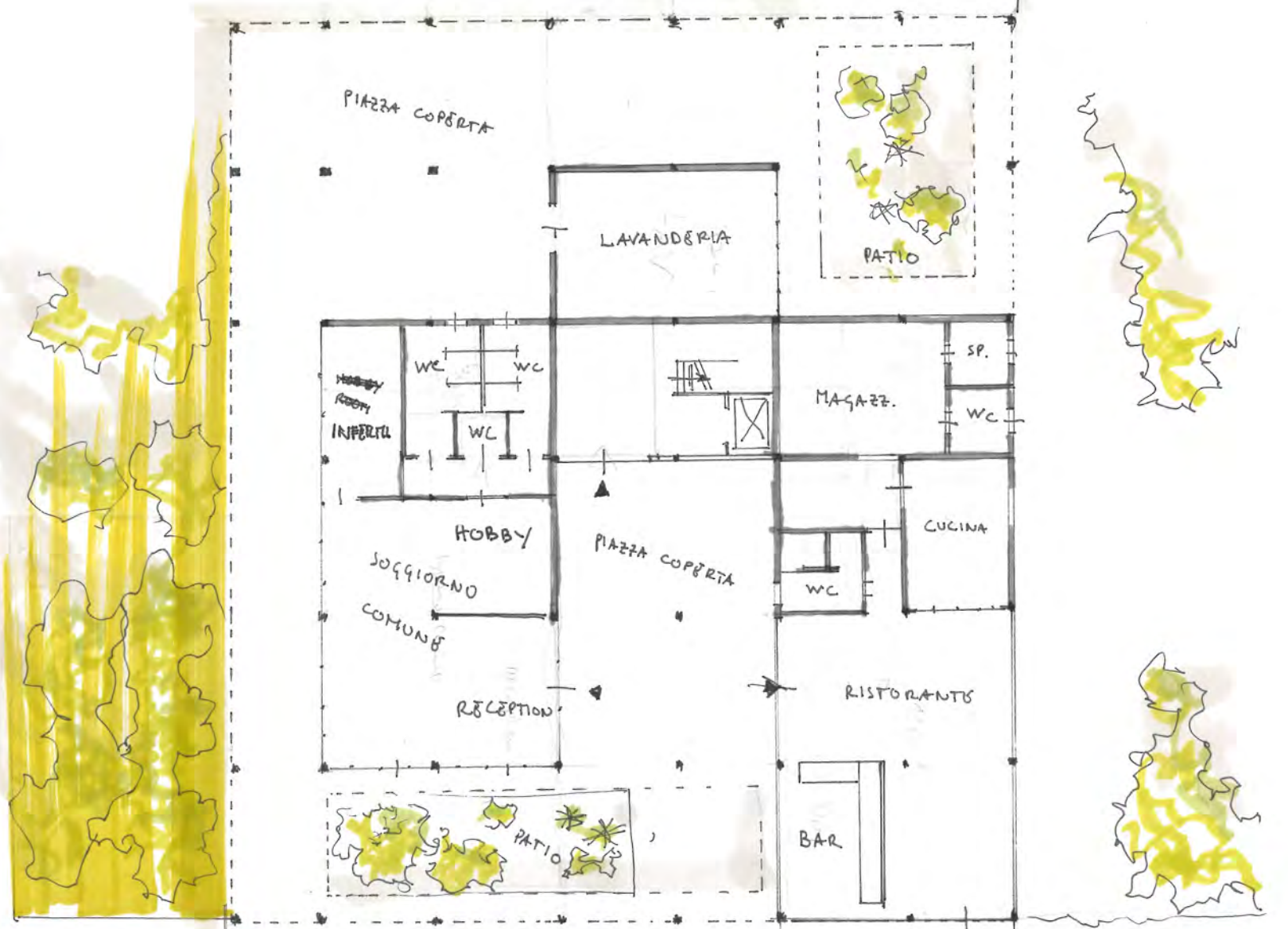
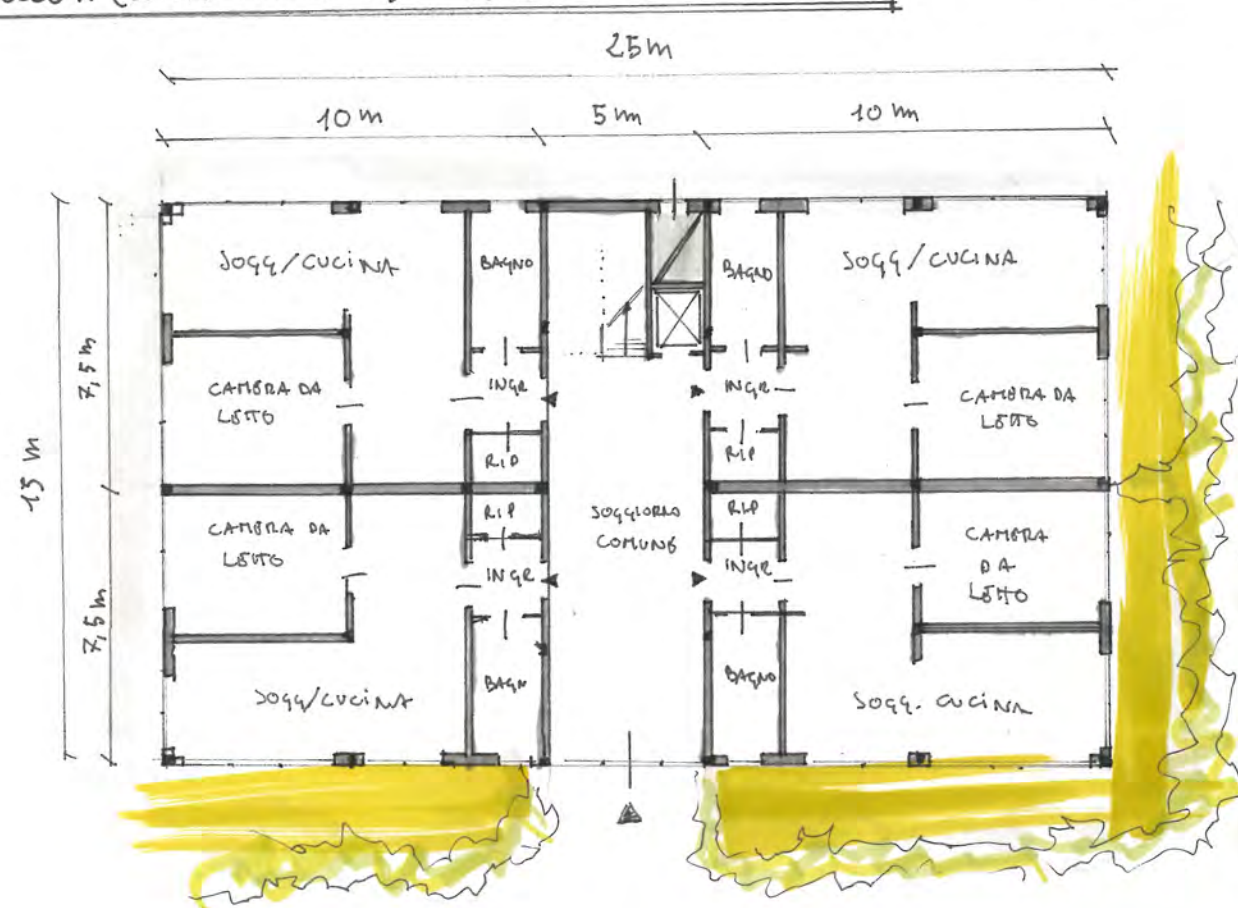
→ PALESTRA = 360 mq

TOT EDIFICATO = 4330mq di cui 700mq a servizi

- | | |
|-----------------------------------|---------------------------------|
| 1. INGRESSO PEDONALE | 6. PALESTRA |
| 2. INGRESSO CARRIOLA AI PARCHEGGI | 7. PLOPPIO / PIAZZA OMBREGGIATA |
| 3. CARICO SCARICO | 8. BLOCCO C (RESIDENZA) |
| 4. PIAZZA CENTRALE | 9. BLOCCO B (RESIDENZA) |
| 5. BLOCCO A (SERVIZI + RESIDENZA) | 10. GIARD. PRIVATI + ORTI |

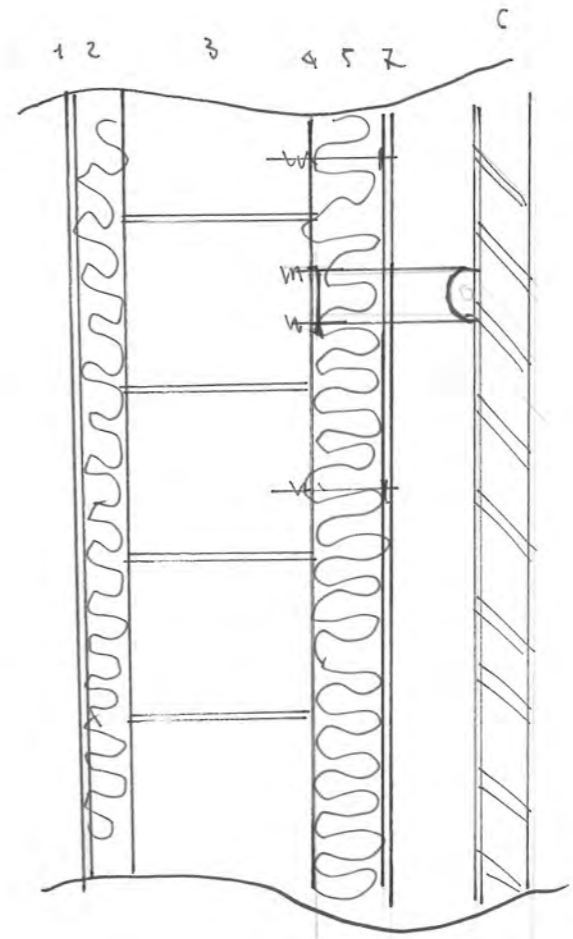


PIANTA GENERALE
SCALA 1:500



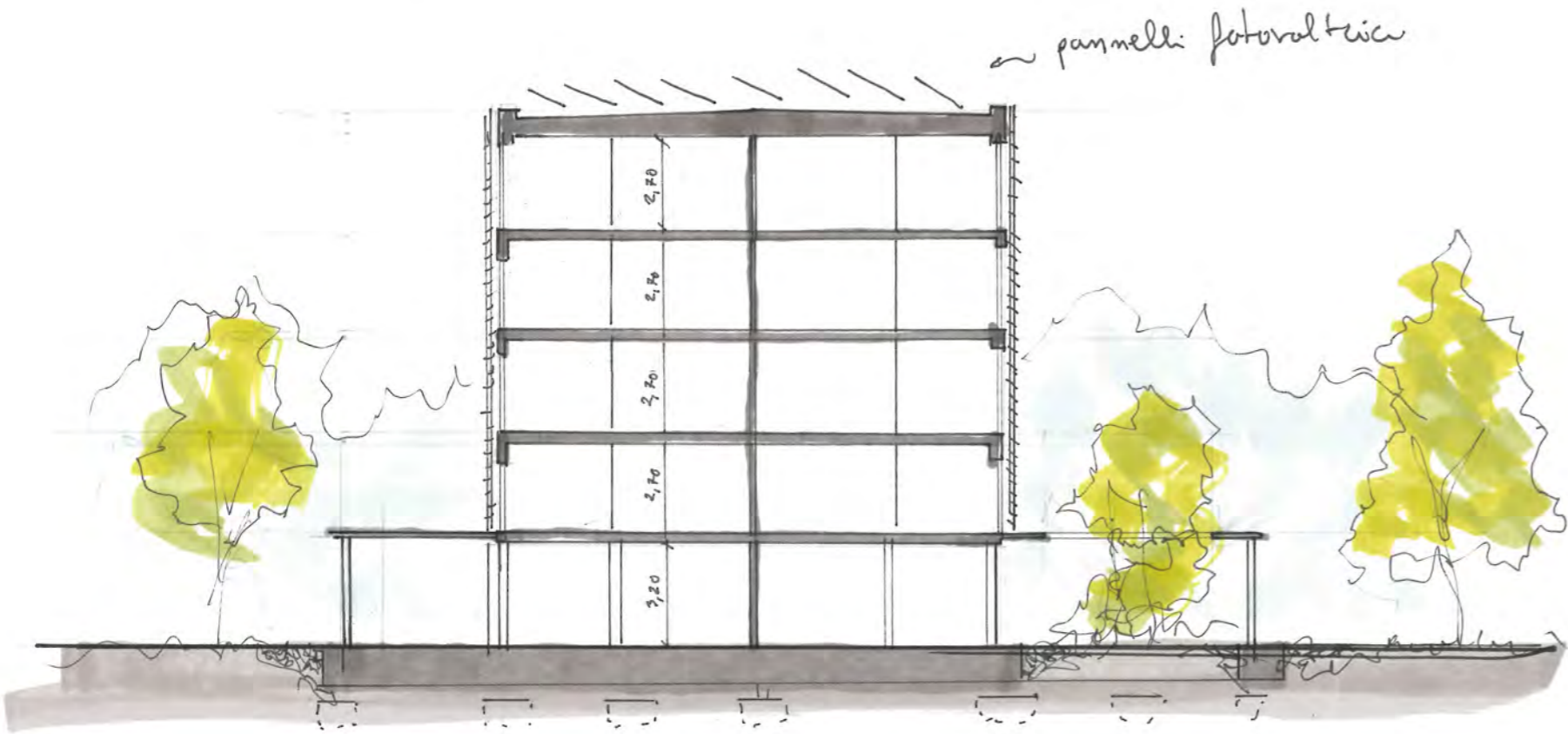
PIANTA PIANO TERRENO SCALA 1:200

TAV 2.

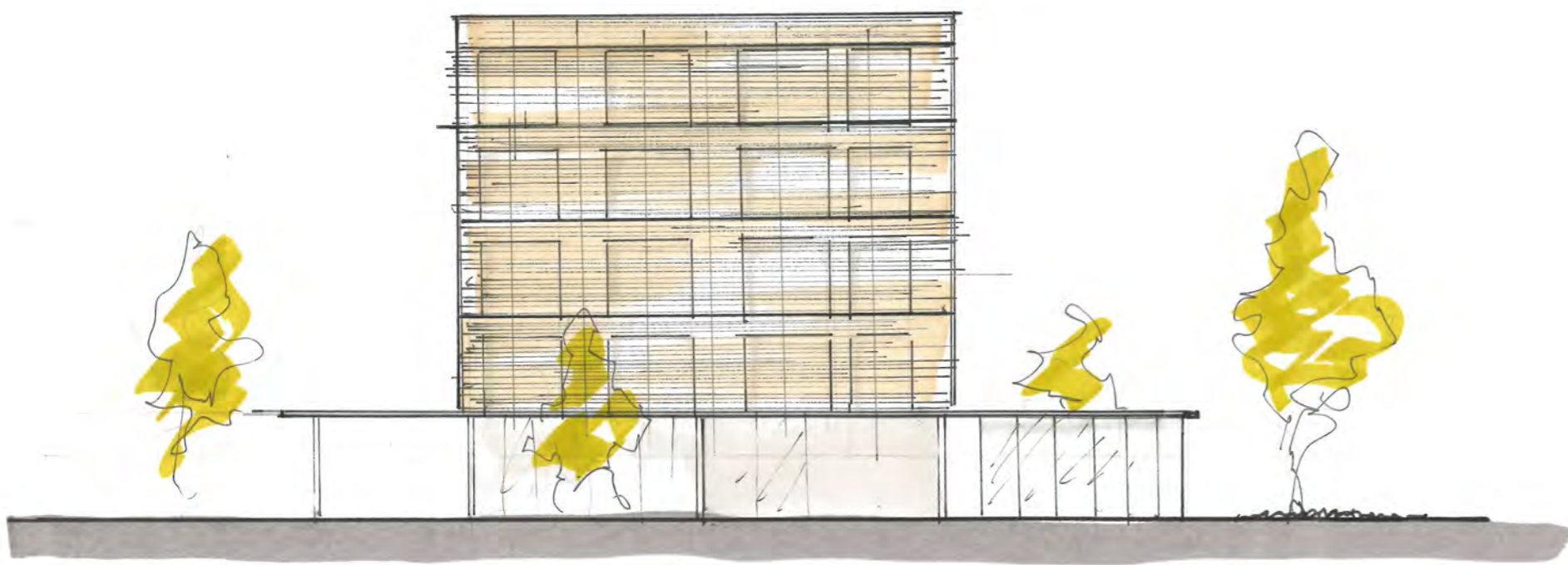


DETTAGLIO SCALA 1:10

- dettaglio generico
e serie ideazione
dei materiali



SEZIONE AA SCALA 1:200



PROSPETTO SUD SCALA 1:200